

# The University of New Mexico Faculty Senate

## Meeting Agenda November 25, 2014 3:00 P.M. Scholes Hall Roberts Room

AGENDA TOPICS		TYPE OF ITEMS/ PRESENTER(S)
3:00	1. Approval of Agenda	Action
	2. <a href="#">Acceptance of the October 28, 2014 Summarized Minutes</a>	Action
	3. Memorial Minute for Dr. Flora Clancy	Action: Joyce Szabo
3:05	4. Faculty Senate President's Report	Information: Pamela Pyle
3:15	5. Provost's Report	Information: Chaouki Abdallah
3:35	6. Honorary Degree Nominations-Senate Must Enter Closed Session for Limited Personnel Matters	Action: Melinda Tinkle
CONSENT AGENDA TOPICS		
3:45	7. <a href="#">2014-2015 Faculty Senate Committee Appointments</a>	Action: Stefan Posse
	8. Fall 2014 Degree Candidates	Action: Stefan Posse
AGENDA TOPICS		
3:50	9. <a href="#">Form D - Graduate Certificate in Law, Environment, and Geography</a>	Action: John Carr
4:00	10. Faculty Athletics Representative Report to the Faculty Senate	Information: Amy Neel
4:10	11. Foundations of Excellence Self-Study Report from the First Year Steering Committee	Information: Amy Neel and Greg Heileman
4:20	12. UNM Healthcare Benefits	Discussion: Dorothy Anderson and Michael Richards
5:00	Adjournment	
5:15	Reception for President and Mrs. Frank at the Faculty Staff Club	All

### NOTES:

1. All faculty are invited to attend Faculty Senate meetings.
2. Full agenda packets are available at <http://www.unm.edu/~facsen/>
3. All information pertaining to the Faculty Senate can be found at <http://www.unm.edu/~facsen/>
4. Questions should be directed to the Office of the Secretary, Scholes 103, 277-4664
5. Information found in agenda packets is in draft form only and may not be used for quotes or dissemination of information until approved by the Faculty Senate.

# FACULTY SENATE SUMMARIZED MINUTES

## 2014-2015 FACULTY SENATE November 25, 2014

The Faculty Senate meeting for November 25 was called to order at 3:00 p.m. in the Roberts Room of Scholes Hall. Faculty Senate President Pamela Pyle presided.

### ATTENDANCE

**Guests Present:** Allen Ernst-UNM West and Branch Initiatives; Amy Neel-Speech and Hearing Sciences; Melinda Tinkle-Faculty Senate Honorary Degree; Tomas Aguirre-Dean of Students; Michael Trujillo – Chicana/o Studies Program; John Carr-Geography; Dorothy Anderson-VP of Human Resources.

### APPROVAL OF THE AGENDA

The agenda was approved as written.

#### 1. Approval of summarized minutes for October 28, 2014 meeting

The minutes were approved as written with no abstentions.

The minutes from Special Faculty Senate meeting for November 11, 2014 will be approved at the January 27, 2014 meeting.

#### 2. Memorial Minute for Dr. Flora Clancy

Flora Simmons Clancy, Professor of Art History in the Department of Art and Art History, passed away on October 20th after a six-month battle with cancer. Dr. Clancy received her BFA from Pratt Institute, and both her MFA and PhD degrees from Yale. She initially came to UNM as a full-time Lecturer in the fall of 1979 prior to the completion of her doctoral dissertation; she had previously taught at Colgate University. After rising through the faculty ranks at UNM, Dr. Clancy became chair of the Department of Art and Art History in the fall of 1997, a position she held until 2000. She retired from UNM in 2005.

Dr. Clancy was an expert in PreColumbian art history, with a specific emphasis in Mayan art. In addition to multiple articles and book chapters, she published the book *Maya: Treasures of an Ancient Civilization* in 1985; *Pyramids* in 1994; *Sculpture in the Ancient Maya Plaza: The Early Classical Period* in 1999; and *The Monuments of Piedras Negras, An Ancient Mayan City* in 2009. In 1991 she co-edited, with Peter Harrison, *Vision and Revision in Maya Studies*.

A memorial service will be held at UNM's Alumni Chapel at 3 p.m. on December 4th. In lieu of flowers, donations can be made to Dumbarton Oaks in Washington, DC in Flora's name to benefit the study of PreColumbian art.

A memorial service will be held at UNM's Alumni Chapel at 3:00 p.m. on Thursday, December 4.

#### 3. Faculty Senate President's Report

Faculty Senate President Pyle and Health Science Center (HSC) Chancellor Paul Roth discussed and finalized a plan that HSC Degree Candidates will be approved by the HSC Board and the Main Campus Candidates will be approved by the Academic/Student Affairs Research (ASAR) Committee with both being approved by the Board of Regents (BOR). Regent Quillen and Regent Hosmer stated that degrees from the HSC side are being bogged down in the curriculum workflow at Dean and Registrars level. Faculty Senate President Pyle will work with Associate Vice President of Enrollment Management Terry Babbitt to resolve this issue.

Following the November 11, 2014 Special Faculty Senate meeting discussion on Results Oriented Management, Faculty Senate President Pamela Pyle will be meeting with schools and colleges individually to discuss their comments and concerns. Faculty Senate President Pyle expressed that there are more creative ways to evaluate faculty's work. Faculty Senate Pyle requested for Senators to communicate their thoughts with her before holiday break.

The Faculty Focus is scheduled for Thursday, December 4, 2014 at 5:15 p.m. in George Pearl Hall located in the School of Architecture and Planning building. Faculty around campus will be honored at this event that will be showing their work. The three revolving BOR will be recognized for their service.

The display of political signs throughout campus is allowed.

Dean of Students Tomas A. Aguirre reported on four students who were in a car accident over the weekend. Two of the students are at home and the other two have passed. Briana Hillard was a senior in Business Administration and a sister in Pi Beta Phi. Matthew Grant was a senior in Criminology and Psychology a member of Sigma Alpha Epsilon. Dean Aguirre is working with both of their colleges for them to be awarded Posthumous Degrees. Julia Thompson is at home. She is a junior studying Speech and Hearing and Psychology. Joe Mendoza is at home. He is a junior studying Mass Communications. Dean Aguirre follows the Student Incident Grid which opens communication regarding the incident and what is needed in a timely manner which involved the President, Provost and Deans.

#### 4. Provost's Report

Provost Chaouki Abdallah reported that the budget is uncertain but the University of New Mexico expects a 2% increase with some compensation coming from the State.

The cost for students is around \$1300 a semester that does not include text book fees. There are ways to help students save money. For example, faculty will order their materials that student need early in the previous semester so students are able to purchase used books. This will help students save money, bookstores and publishers to keep their revenue and help students get the materials needed to learn their field.

#### Honorary Degree Nominations

Honorary Degree Committee Chair Melinda Tinkle (College of Nursing) presented the 2015 Honorary Degree Candidates. The 2015 Honorary Candidates have been previously considered and approved by the Honorary Degree Committee and the Faculty Senate Graduate Committee, ballots with the candidate's biography was distributed to senators.

An open discussion of the candidates required a closed session. Confidentiality is maintained until the process is complete. The Faculty Senate voted unanimously to move into closed Executive Session to discuss the limited personnel matter related to the Honorary Degree candidates. All non-senators were asked to leave the room for the discussion. The Senate discussed the candidate and asked questions of Professor Tinkle. After the discussion concluded, the Faculty Senators turned in their ballots. The Faculty Senate unanimously voted to re-open the meeting.

After re-opening the meeting and allowing for non-senators to be reseated, the Faculty Senate unanimously voted to certify that the matter discussed in Executive Session was limited to the Honorary Degree Candidate.

#### 5. 2014-2015 Faculty Senate Committee Appointments

The 2014-2015 Faculty Senate Committees appointments were approved by unanimous voice vote of the Faculty Senate.

Faculty Senate Committee Appointments Needing Senate Approval				
Information Technology Use Committee				
First	Last	Title	Department	Committee
Jonathan	Wheeler	Lecturer	University Libraries	Information Technology Use Committee
Eugene	Koshkin	Clinician Ed-Associate Professor	Anesthesiology Department	Information Technology Use Committee
Scott A	Ness	Professor	Internal Medicine IM	Information Technology Use Committee
Research Allocation Committee				
First	Last	Title	Department	Committee
				Research Allocation

## **Fall 2014 Degree Candidates**

The Fall 2014 Degree Candidates were approved by unanimous voice vote of the Faculty Senate.

### **6. Form D – Graduate Certificate in Law, Environment, and Geography**

Assistant Professor of Geography John Carr presented on Form D Graduate Certificate in Law, Environment, and Geography. The program is for one year. The proposal is part of a broader planning process that the Department of Geography has been working on for the past five years. Within the last 8 years, the Department of Geography increased from a two member department to a 10 member department. When the proposal was first submitted there were three faculty members with Law Degrees which brought a strength to their department by pushing a focus to law environment in Geography that includes an Undergraduate Minor. A shared credit degree program was recently created with Environmental Economics. The idea is to use the faculty and the shared credits to create a product that can offer students into the program.

Form D, Graduate Certificate in Law, Environment, and Geography was approved by unanimous voice vote of the Faculty Senate.

### **7. Faculty Athletics Representative Report to the Faculty Senate**

Faculty Athletics Representative Amy Neel reported to the Faculty Senate. Her representation for the Faculty Athletics is a NCAA mandated position by the Athletic Association. Every NCAA school has to have a Faculty Athletics representative. One of two faculty venues for Academic oversight of the Athletics Department. The other is the Faculty Senate Athletics Council Chaired by Alfred Mathewson from School of Law. The Athletic Council has a Academic Integrity sub-committee Chaired by Marie Lobo from College of Nursing. The Faculty Athletics Representative is a representative of the institution and its faculty while assisting in maintaining the welfare of student athletes. The University of North Carolina under went a review to obtain results for a comprehensive report of academic integrity issues at their University. A Student Services Manager named Debbie Krager from the African American Studies Program devised independent courses for struggling students. Student Athletes were steered to take these courses. A number of faculty and administrators were aware of these irregularities but took no action. The NCAA did not fine irregularities at the time this was occurring but they are now investigating the University. Representative Neel assured the Faculty Senate that these irregularities will not happen at the University of New Mexico. She has put in place the Academic Integrity sub-committee to review all courses who have high enrollment of student athletes. This will be reviewed at the beginning of each semester. If there is a course of concern Representative Neel will meet with the advisor and the faculty. After every semester Representative Neel will receive the athletes grades to monitor any issues. She encouraged all faculty who have questions or concerns to contact her.

### **8. Foundations of Excellence Self-Study Report from the First Year Steering Committee**

Associate Vice Provost Greg Heilman and Associate Professor of Speech and Hearing Amy Neel reported on the Foundations of Excellence Self-Study Report from the First Year Steering Committee.



# Foundations of Excellence

Faculty Senate • Nov. 25, 2014



THE UNIVERSITY *of*  
NEW MEXICO



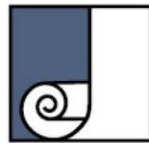
## **FoE: Timeline**

- Self-Study Kick-Off    Sept. 2012
- Dimension Reports    March 2013
- Final Report            June 2013
- Implement                Aug. 2013 - May 2015

*UNM Freshmen!*

Fou

EVERYONE'S A  
**LOBO**



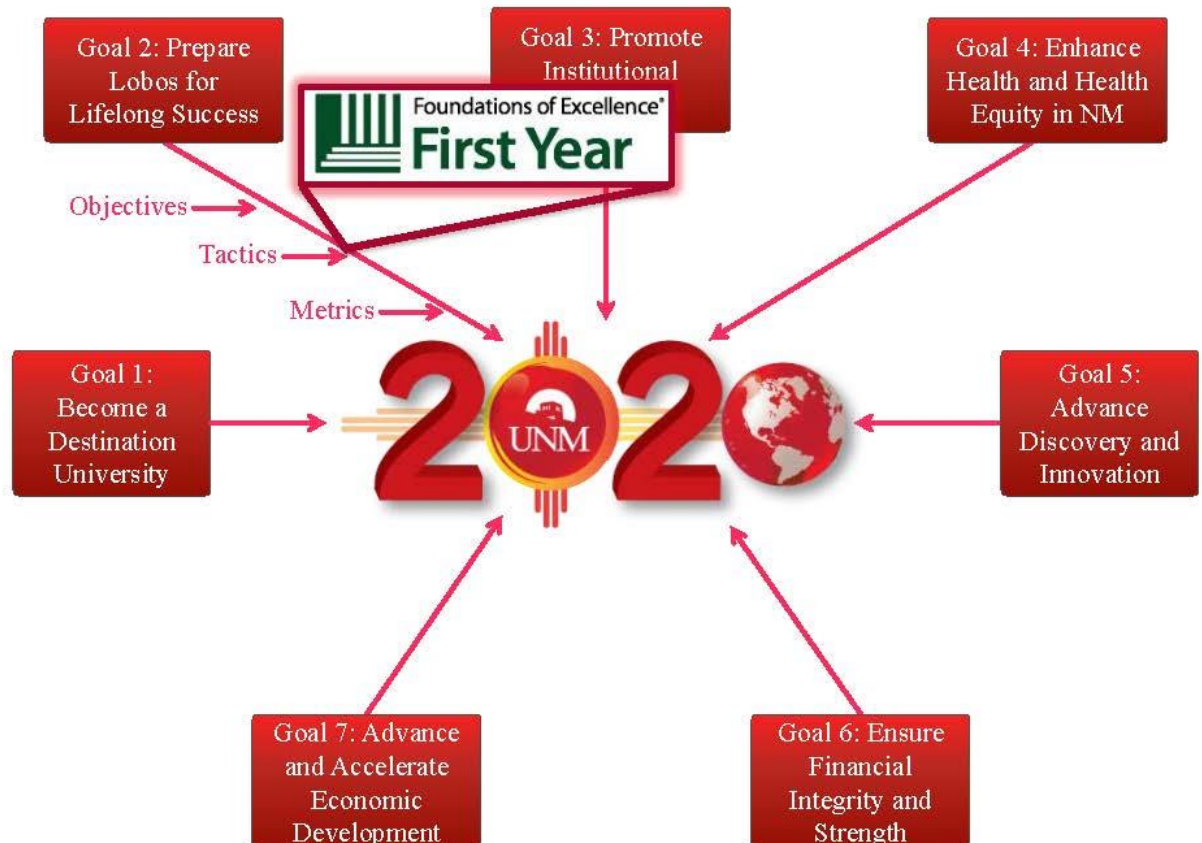
John N. Gardner

**Institute for Excellence**  
in Undergraduate Education



George Kuh

• <http://provost.unm.edu/ac>



# F.Y.S.C.

## First Year Steering Committee



Terry Babbitt

*AVP for Enrollment Management*



Tim Gutierrez

*AVP, Student Services*



Tomas Aguirre

*Dean of Students*



Joe Suilmann

*FoE, Program Coordinator*

### Co-Chairs



Kate Krause

*Dean, University College and Honors College*



Greg Heileman

*Associate Provost for Curriculum*



Diane Marshall

*Associate Dean, College of Arts & Sciences*



Amy Neel

*Assoc. Professor, Speech & Hearing Sciences*



Jennifer Gomez-Chavez

*Director, Student Academic Success*



Vanessa Harris

*Dir., University Advisement Center*

### Subcommittees

#### Communication



Carolina Aguirre

*Dir. STEM Up*

#### New Student Orientation



Sonia Rankin

*Assoc. Dean, University College*

#### Data & Assessment

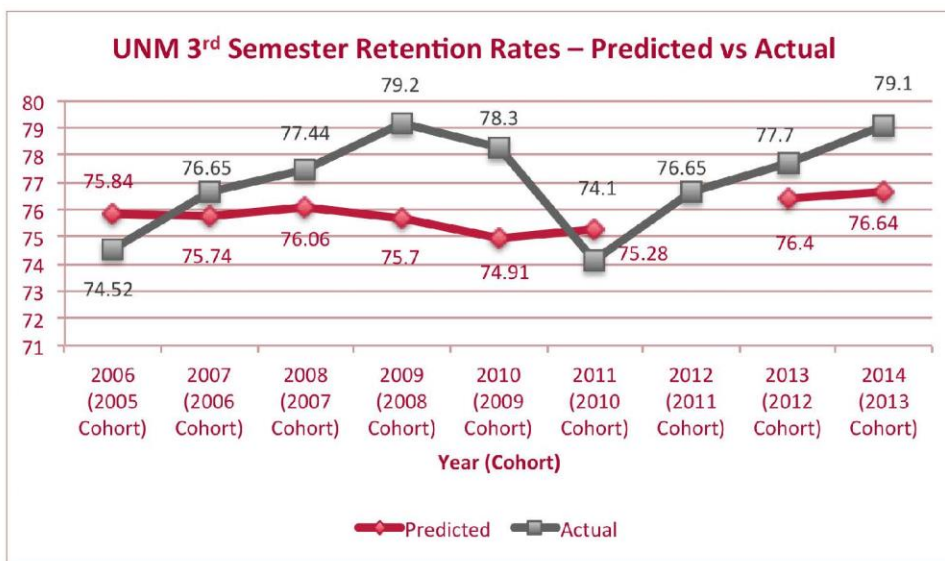


Tim Schroeder

*Dir. STEM Gateway Program*



## Early Results



Source: Office of the President

Note: High School GPA is a key variable in these projections, and that information was not entered into Banner for the 2011 cohort, resulting in a gap in projected retention rates.



# First-Year Mission Statement



*As this state's flagship research university serving a highly diverse student body, the University of New Mexico is committed to offering a high-quality education marked by a challenging and supportive environment that provides all students with the foundation for academic and personal success in the first year and beyond.*



## Transition to College

- First-Year Communication
- Student Placement
- Introductory Studies
  - English Stretch & Studio
  - MaLL
- New Student Orientation







## New Student Orientation Redesign

*Our mission is to welcome students to the UNM community and introduce them to their role in the creation of new knowledge. We will do this by sharing resources and strategies that encourage students to reach ambitious academic goals and exceed their own expectations.*



## Curriculum: Pathways to Success

### Undergraduate Degrees

#### Arts & Culture

Have you been interested in how humans and societies interact with each other from a perspective of race, ethnicity, gender and nationality? Does the intersection of arts, culture and the world stimulate you to think critically? UNM prides itself on its diversity and by majoring in an arts and culture area, you will emerge with a dynamic mindset of inquiry to delve deeper into these topic areas.

[Learn More](#)

#### Explore By Interest:

Exploratory & Interdisciplinary	Technology & Science	Law & Social Justice	Infrastructure, Construction & Design
Policy & Politics	Engineering & Mathematics	Humanities & Languages	Life Sciences, Health & Healthcare
Business, Finance & Economics	Creative Expressions	Computing & Cyberspace	Energy & Environment
Physical Sciences	Social Science & Transformation	<b>Arts &amp; Culture</b>	Teaching & Learning

#### Explore By College:

University College	Honors College
College of Fine Arts	College of Arts & Sciences
Anderson School of Management	College of Education
School of Engineering	School of Architecture and Planning
University Libraries and Learning Sciences	School of Medicine
College of Nursing	

#### Explore By Keyword:

[degrees.unm.edu](https://degrees.unm.edu)



# Undergraduate Degrees

## 2013-14 Degree Plan Computer Engineering, BS

School of Engineering, Department of Electrical & Computer Engineering

Graph View

### 4 Year Plan

Starting Math:150

CNM to UNM Transfer

Term 1	Hours Towards Degree: 17	Crucial course: ①	Hours	Minimum Grade	Notes
ENGL 101: Composition 1: Exposition			3	C	
① MATH 162: Calculus I			4	C	
ECE 101: Introduction to Electrical & Computer Engineering			1	C	
ECE 131: Introduction to Programming			3	C	
① PHYC 160: General Physics I			3	C	
ECON 105: Macroeconomics or ECON 106: Microeconomics			3	C	
Term Hours:			17		

Term 2	Hours Towards Degree: 34	Crucial course: ①	Hours	Minimum Grade	Notes
ENGL 102: Composition II: Analysis and Argument			3	C	
① MATH 163: Calculus II			4	C	
① PHYC 161: General Physics II			3	C	
PHYC 161L: General Physics II Lab			1	C	
ECE 231: Intermediate Programming			3	C	
Humanities			3	C	
Term Hours:			17		



## Curriculum



- Degree Maps ([degrees.unm.edu](https://degrees.unm.edu))
- 120 Credit-Hour Minimum
- FLCs
- Writing-Intensive Courses
- Center for Teaching Excellence
- Diversity Requirement



## Connecting Students with Resources

- Student Success Centers
- [students.unm.edu](http://students.unm.edu)
- Early Alerts & LoboAchieve
- Advising Redesign



## High-Impact Practices

Nationally, 1<sup>st</sup> year students who participate in HIPs

- Are more engaged (as measured by the NSSE),
- Are retained at higher rates,
- Earn higher GPAs,
- Accumulate more credit hours per semester, and
- Graduate at higher rates.

At UNM, they also matriculate to a degree-granting college in fewer semesters.

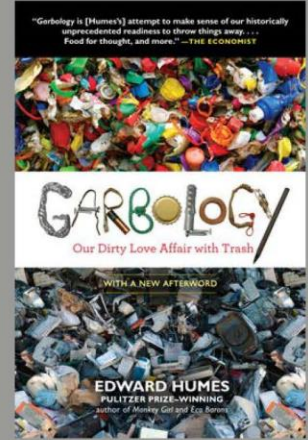






# High-Impact Practices

- Lobo Reading Experience
- Community Engagement
- Themed Residence Floors
- MyUniversity
- Academic Coaching
- Undergraduate Research
- Supplemental Instruction



## We are UNM

### Student Team

Sound Director **Sean Trauth**  
 Editor **Eric Barreras**  
 Multimedia Journalist **Bianca Martinez**  
 Creative Director **Emily Garrity**  
 Videographer **Marshall Broyles**

### Supporting Programs

University Communication and Marketing  
 Office of Academic Affairs  
 Communication & Journalism Department  
 College of Fine Arts, Department of Music  
 College of Fine Arts, Department of Cinematic Arts





## 9. UNM Healthcare Benefits

Vice President of Human Resources Dorothy Anderson and Executive Physician-in-Chief of UNM Health System Michael Richards reported on UNM Healthcare Benefits.

### Board of Regents Update – Health Plan Committee

*Michael Richards – Exec Physician-in-Chief  
Dorothy Anderson – VP Human Resources  
November 14, 2014*



### Health Plan Committee – July 2014

- Health Plan Steering Committee - Chancellor Roth, EVP Harris, Ava Lovell, Richards, & Anderson
- Health Plan Committee - 25 Members from Main & HSC – representing all facets of UNM Community including functional experts, actives & retirees
  - Health Technical Committee
  - Consolidation Committee

## Charge of the Committee

- To research and make recommendations for consolidation and integration by Dec. 2014
- To recommend a plan design with the following attributes: affordable, reduced cost, high-quality health care, sustainability, contemporary, and is attractive to former, current, & future employees
- Recommendations should have minimum disruption and still preserve choice
- Recommendations that are cost neutral

## Recommendations - Immediate

- **Immediately** - Increase employee/dependent engagement in disease management and wellness programs through targeted programs and communication.
- **Immediately** – Continue collaborative efforts with UNM School of Pharmacy to identify opportunities to reduce Rx costs with enhanced service. Explore other options to reduce Rx cost while preserving choice.
- **Immediately** - Begin full *evaluation* of the possibility of modifying a current UNM Hospital Clinic or building a new facility dedicated to student, retiree, employee, and dependent only services.
- **Immediately** - All four employers (UNM, UNMMG, SRMC and UNMH) join together to expand collective purchasing opportunities. Each employer will retain autonomy over contracts/agreements, financial responsibilities, and assets/liabilities.

## Recommendations – FY16 & FY17

- **FY16** - Develop plan design structures with additional incentives to increase LoboCare utilization across all TPAs. The estimated cost to UNM is approximately \$900K.
- **FY16** - Begin decreasing the number of TPAs administering UNM's medical plans with a goal of moving to a capitated ACO payment model.
- **FY16** – Defer the planned .25% VEBA contribution increase for VEBA participants.
- **FY16 & FY17** - Continue *evaluation* of implementing a High Deductible Health Plan (HDHP) and Health Savings Account (HSA) for active employees to be offered in addition to other plans.

## Recommendation – Compromise Blending Of Rates

- **FY16** – A blending of pre-65 experience with active employee experience; analysis is based on FY15 rates & resulted in approximately:
  - A 20% reduction to the pre-65 retiree premiums;
  - A 2.5% increase in the premiums for active employee; and
  - An increase to the AAL of 8% (\$94M to \$101.5M).
- Although proposed premiums may differ for pre65 retirees and actives, options are for one integrated pool to be treated as one population with the same plan offerings & inflation trend increases.
- Accept the recommendation from the Health Plan Committee in lieu of a vote from Active Employee Health Participants.
- Evaluate the possibility of adjusting the Pre-65 participant premiums prior to July 1, 2015 with no increase to active rates.
- *Vote from committee members – 11 support; 0 oppose; and 1 abstain*

# Discussion Item without Consensus

- TBD – Discontinue post-retirement benefits for employees hired with an effective date of July 1, 2015 or later.
  - Concern – negative impact to recruitment efforts
  - Concern – uncertainty regarding insurance market changes – pend until after 2016
  - Comment – reflects current trend in industry
  - Comment – eliminates future unfunded liability for those employees
  - Further Clarification – eliminate only pre65 benefits or all post retirement benefits

## Next Steps

- Begin communications campaign to promote total value of current UNM benefit package including retirement (ERB)
- Focus efforts on moving forward on immediate recommendations
- Begin efforts required to implement FY16 recommendations
- Begin efforts to implement recommendation for blending of pre65 retirees & active employees
- Continue to evaluate:
  - Possibility of an employee, retiree, student and dependent only clinic that is centrally located
  - Possibility of offering a HDHP with a HSA as a plan option for active employees
  - Possibility of discontinuing post-retirement benefits for new employees
- Continue collaborative efforts with UNM (Main/HSC) Community - Active Faculty & Staff; Retirees and other partners regarding benefits



**FY16 Health Insurance - Anticipated Monthly Cost Active Employees (BCBS: Single & Family)**

**Scenario 1** - No blending of Pre65 experience and continue with scheduled .25% VEBA Increase

**Scenario 2** - Blending of Pre65 experience with 20% reduction for Pre65s and 2.5% premium increase for actives; and defer .25% scheduled VEBA increase

<b>Annual Salary of \$25,000</b>	<b>Scenario 1</b>		<b>Scenario 2</b>	
<b>Insurance Coverage</b>	<b>Single</b>	<b>Family</b>	<b>Single</b>	<b>Family</b>
Current Employee Contribution	84.80	247.20	84.80	247.20
FY16 7% Increase Trending	5.94	17.30	5.94	17.30
Fy16 2.5% Increase Blending	-	-	2.12	6.18
FY16 .25% VEBA Increase	5.21	5.21	-	-
Total Increase From FY15	11.14	22.51	8.06	23.48
FY16 Monthly Cost	95.94	269.71	92.86	270.68
Net Monthly Inc to Employee	11.14	22.51	8.06	23.48
<b>Implementing Scenario 2</b> Single Plan - Employee savings of \$3.09 per month				
<b>Implementing Scenario 2</b> Family Plan - Employee increase of .97 per month				

<b>Annual Salary \$40,000</b>	<b>Scenario 1</b>		<b>Scenario 2</b>	
<b>Insurance Coverage</b>	<b>Single</b>	<b>Family</b>	<b>Single</b>	<b>Family</b>
Current Employee Contribution	127.20	370.80	127.20	370.80
FY16 7% Increase Trending	8.90	25.96	8.90	25.96
Fy16 2.5% Increase Blending	-	-	3.18	9.27
FY16 .25% VEBA Increase	8.33	8.33	-	-
Total Increase From FY15	17.24	34.29	12.08	35.23
FY16 Monthly Cost	144.44	405.09	139.28	406.03
Net Monthly Inc to Employee	17.24	34.29	12.08	35.23
<b>Implementing Scenario 2</b> Single Plan - Employee savings of \$5.15 per month				
<b>Implementing Scenario 2</b> Family Plan - Employee increase of .94 per month				

<b>Annual Salary \$70,000</b>	<b>Scenario 1</b>		<b>Scenario 2</b>	
<b>Insurance Coverage</b>	<b>Single</b>	<b>Family</b>	<b>Single</b>	<b>Family</b>
Current Employee Contribution	169.60	494.40	169.60	494.40
FY16 7% Increase Trending	11.87	34.61	11.87	34.61
Fy16 2.5% Increase Blending	-	-	4.24	12.36
FY16 .25% VEBA Increase	14.58	14.58	-	-
Total Increase From FY15	26.46	49.19	16.11	46.97
FY16 Monthly Cost	196.06	543.59	185.71	541.37
Net Monthly Inc to Employee	26.46	49.19	16.11	46.97
<b>Implementing Scenario 2</b> Single Plan - Employee savings of \$10.34 per month				
<b>Implementing Scenario 2</b> Family Plan - Employee savings of \$2.22 per month				

**FY16 Health Insurance - Anticipated Monthly Cost Active Employees (Presbyterian: Single & Family)**

**Scenario 1** - No blending of Pre65 experience and continue with scheduled .25% VEBA Increase

**Scenario 2** - Blending of Pre65 experience with 20% reduction for Pre65s and 2.5% premium increase for actives; and defer .25% scheduled VEBA increase

<b>Annual Salary of \$25,000</b>	<b>Scenario 1</b>		<b>Scenario 2</b>	
<b>Insurance Coverage</b>	<b>Single</b>	<b>Family</b>	<b>Single</b>	<b>Family</b>
Current Employee Contribution	115.20	335.80	115.20	335.80
FY16 7% Increase Trending	8.06	23.51	8.06	23.51
Fy16 2.5% Increase Blending	-	-	2.88	8.40
FY16 .25% VEBA Increase	5.21	5.21	-	-
Total Increase From FY15	13.27	28.71	10.94	31.90
FY16 Monthly Cost	128.47	364.51	126.14	367.70
Net Monthly Inc to Employee	13.27	28.71	10.94	31.90
<b>Implementing Scenario 2</b> Single Plan - Employee savings of \$2.33 per month				
<b>Implementing Scenario 2</b> Family Plan - Employee increase of \$3.19 per month				

<b>Annual Salary \$40,000</b>	<b>Scenario 1</b>		<b>Scenario 2</b>	
<b>Insurance Coverage</b>	<b>Single</b>	<b>Family</b>	<b>Single</b>	<b>Family</b>
Current Employee Contribution	172.80	503.70	172.80	503.70
FY16 7% Increase Trending	12.10	35.26	12.10	35.26
Fy16 2.5% Increase Blending	-	-	4.32	12.59
FY16 .25% VEBA Increase	8.33	8.33	-	-
Total Increase From FY15	20.43	43.59	16.42	47.85
FY16 Monthly Cost	193.23	547.29	189.22	551.55
Net Monthly Inc to Employee	20.43	43.59	16.42	47.85
<b>Implementing Scenario 2</b> Single Plan - Employee savings of \$4.01 per month				
<b>Implementing Scenario 2</b> Family Plan - Employee increase of \$4.26 per month				

<b>Annual Salary \$70,000</b>	<b>Scenario 1</b>		<b>Scenario 2</b>	
<b>Insurance Coverage</b>	<b>Single</b>	<b>Family</b>	<b>Single</b>	<b>Family</b>
Current Employee Contribution	230.40	671.60	230.40	671.60
FY16 7% Increase Trending	16.13	47.01	16.13	47.01
Fy16 2.5% Increase Blending	-	-	5.76	16.79
FY16 .25% VEBA Increase	14.58	14.58	-	-
Total Increase From FY15	30.71	61.60	21.89	63.80
FY16 Monthly Cost	261.11	733.20	252.29	735.40
Net Monthly Inc to Employee	30.71	61.60	21.89	63.80
<b>Implementing Scenario 2</b> Single Plan - Employee savings of \$8.82 per month				
<b>Implementing Scenario 2</b> Family Plan - Employee increase of \$2.21 per month				

11.23.14

Meeting adjourned at 5:00 p.m.

## Faculty Senate Committee Appointments Needing Senate Approval

Information Technology Use Committee				
First	Last	Title	Department	Committee
Jonathan	Wheeler	Lecturer	University Libraries	Information Technology Use Committee
Eugene	Koshkin	Clinician Ed-Associate Professor	Anesthesiology Department	Information Technology Use Committee
Scott A	Ness	Professor	Internal Medicine IM	Information Technology Use Committee

Research Allocation Committee				
First	Last	Title	Department	Committee
Karen	Roybal	Visiting Research Scholar	Center for Regional Studies	Research Allocation Committee

Undergraduate Committee				
First	Last	Title	Department	Committee
Jamie	Gomez	Lecturer III	Department of Chemical and Biological Engineering	Undergraduate Committee



THE UNIVERSITY of  
NEW MEXICO

Office of the Vice Provost for Academic Affairs  
MSC05 3400  
1 University of New Mexico  
Albuquerque, NM 87131-0001  
505.277.2611

Date: 22 August 2012

To: Dr. Scott Freunds Schuh, Chair, Department of Geography and Environmental Studies

Re: Pre-approval for Graduate Certificate in Law, Environment, & Geography

---

Thank you for submitting the following department of Geography proposal for a Graduate Certificate in Law, Environment, and Geography for review by the Office of the Provost. In my judgment, the proposed certificate course has been sufficiently well developed to warrant submission to the Faculty Senate Curricula Committee, please feel free to proceed.

Sincerely,

Dr. Gregory L. Heileman  
Associate Provost for Curriculum

Cc: Chaouki Abdallah, Interim Provost and EVP for Academic Affairs  
Nancy Middlebrook, University Accreditation Director  
Elizabeth Barton, Associate Registrar  
John Carr, J.D., Ph.D., Assistant Professor, Geography

Received

SEP 26 2014

Graduate Office  
University of New Mexico

Received

OCT 17 2014

Graduate Office  
University of New Mexico



# NEW GRADUATE DEGREE OR GRADUATE CERTIFICATE FORM D

**UNIT PREPARES IN QUADRUPLICATE**  
Route as indicated below under approvals. Return to the Registrar's Office once all signatures have been obtained.

Date: Sept 11, 2012

John Carr  
(Name of individual initiating Graduate Degree or Graduate Certificate)

Assistant Professor  
(Title, position, telephone number)

Carrj@unm.edu  
(Email address)

Geography & Environment Studies  
(Department/Division/Program)

\*Allow up to one year for the process to be completed for a certificate, and 18 months for a degree.

Note: Proposals for new graduate degrees or graduate certificates need to follow an approved format. Please call the Office of Graduate Studies and ask for an outline. Revisions of graduate degrees and some new certificates also may need state approval, depending on the extent of changes proposed. Please consult the Office of the Provost for advice prior to initiating this form.

Attach the following required documents:

1. Executive Summary.
2. Program Proposal (in the approved format).
3. Catalog Description (to include program curriculum).
4. Graduate Program Projected Costs (only for new degrees).
5. Library Impact Statement.

Does this new degree affect any existing program? Yes ☐ No ☒ If yes, attach statement.

Proposed date to admit new students: Term Fall Year 2013

## Required Signatures:

Department Chair Scott Hunsbeler

Date 9/11/2012

College Curricula Committee James M. Gable

Date 12/4/2012

College or School Dean Paul C. Long

Date 11/31/13

Dean of Library Services Michael J. ...

Date 2/14/14

Office of the Registrar—Catalog Elizabeth A. Baxton

Date 09/26/14

FS Graduate Committee Julie ...

Date 10/16/14

Dean of Graduate Studies Carolyn Montoya

Date 11/11/14

FS Curricula Committee Lygg ...

Date 11/12/14

Office of the Provost Lygg ...

Date 11/12/14

Faculty Senate Lygg ...

Date 11/12/14

Board of Regents Lygg ...

Date 11/12/14

## Additional Approvals for Degrees:

Board of Regents Lygg ...

Date 11/12/14

Council of Graduate Deans Lygg ...

Date 11/12/14

Academic Council of Higher Education Lygg ...

Date 11/12/14

Higher Education Department Lygg ...

Date 11/12/14

State Board of Finance Lygg ...

Date 11/12/14

Entered Banner

Entered Catalog

For Registrar's Office ONLY:

Copies Mailed

## DEPARTMENT OF GEOGRAPHY & ENVIRONMENTAL STUDIES

### PROPOSAL FOR GRADUATE CERTIFICATE IN "LAW, ENVIRONMENT, AND GEOGRAPHY"

#### **Executive Summary:**

Seeking to capitalize on a nationally unparalleled departmental strength in legal and environmental geography, the Department of Geography proposes to create a new, one-year graduate certificate in Law, Environment and Geography. In the past six years, the Department has added 9 new faculty, and has engaged in an ongoing strategic planning process to both capitalize on these hires and to strengthen the department's position within the discipline and the region. The departmental recognition and commitment to a focus on Law, Environment, and Geography – including the proposed program – is a result of this strategic planning process.

The Certificate in Law, Environment, and Geography seeks to provide students both tools and analytic frames for understanding the spatial and legal dimensions of environmental dynamics and challenges. While the law can be a powerful tool for addressing issues of environmental regulation and resource management, the ways we write and enforce our laws can substantially impact environmental dynamics. The spatial dimensions of these impacts, and the inherent spatiality of legal regulatory concerns are pressing concerns for environmental researchers and policy makers. By offering a curriculum that stresses these interconnections the Certificate in Law, Environment, and Geography empowers students to ask critical questions about the how human regulation and environmental dynamics play out at a variety of scales.

UNM's Department of Geography has a unique strength in that two of its eight faculty have J.D.'s and several other members of the faculty have expertise in legal history and natural resource management. The department is working to capitalize on this strength by creating a new graduate certificate using entirely existing campus resources and faculty. The primary goal of the project is provide new opportunities for undergraduate, graduate and law students at UNM who are interested in education and training in law and natural resource policy and management. Its secondary goal is to enhance the Department's reputation as a national leader in the growing field of legal geography.

The curriculum would be based upon already existing courses. Twelve Credit Hours would be taken from existing offerings within the Department of Geography and Environmental Studies. An additional six Credit Hours of electives would be required from a list of approved courses from American Studies, Economics, History, Community and Regional Planning, and the Law School. Because the curriculum depends solely on existing classes, and because the certificate program will likely involve a modest enrollment in the immediate future, the impact on existing courses should be fairly minimal.

There are no other even remotely similar programs offered in New Mexico public



or private institutions of higher learning.

The new program will appeal to (1) environmental, natural resources professionals who are either dealing with legal challenges through their work, or who want the program for promotion (2) undergraduate students seeking to enhance their credentials in preparation for studying environmental and/or natural resources law, and (3) undergraduates who are looking to enter into the environmental and natural resource management field professionally.

Because much of the curriculum is based upon existing course offerings, shifts faculty and course offerings both in the Department and across campus should not create additional faculty needs for the Certificate Program. No additional faculty or staff will be required, and there is no projected additional cost to the program.

## DEPARTMENT OF GEOGRAPHY & ENVIRONMENTAL STUDIES

### PROPOSAL FOR GRADUATE CERTIFICATE IN “LAW, ENVIRONMENT, AND GEOGRAPHY”

#### **Executive Summary:**

Seeking to capitalize on a nationally unparalleled departmental strength in legal and environmental geography, the Department of Geography proposes to create a new, one-year graduate certificate in Law, Environment and Geography. In the past six years, the Department has added 9 new faculty, and has engaged in an ongoing strategic planning process to both capitalize on these hires and to strengthen the department's position within the discipline and the region. The departmental recognition and commitment to a focus on Law, Environment, and Geography – including the proposed program – is a result of this strategic planning process

The Certificate in Law, Environment, and Geography seeks to provide students both tools and analytic frames for understanding the spatial and legal dimensions of environmental dynamics and challenges. While the law can be a powerful tool for addressing issues of environmental regulation and resource management, the ways we write and enforce our laws can substantially impact environmental dynamics. The spatial dimensions of these impacts, and the inherent spatiality of legal regulatory concerns are pressing concerns for environmental researchers and policy makers. By offering a curriculum that stresses these interconnections the Certificate in Law, Environment, and Geography empowers students to ask critical questions about the how human regulation and environmental dynamics play out at a variety of scales.

UNM's Department of Geography has a unique strength in that two of its eight faculty have J.D.'s and several other members of the faculty have expertise in legal history and natural resource management. The department is working to capitalize on this strength by creating a new graduate certificate using entirely existing campus resources and faculty. The primary goal of the project is provide new opportunities for undergraduate, graduate and law students at UNM who are interested in education and training in law and natural resource policy and management. Its secondary goal is to enhance the Department's reputation as a national leader in the growing field of legal geography.

The curriculum would be based upon already existing courses. Twelve Credit Hours would be taken from existing offerings within the Department of Geography and Environmental Studies. An additional six Credit Hours of electives would be required from a list of approved courses from American Studies, Economics, History, Community and Regional Planning, and the Law School. Because the curriculum depends solely on existing classes, and because the certificate program will likely involve a modest enrollment in the immediate future, the impact on existing courses should be fairly minimal.

There are no other even remotely similar programs offered in New Mexico public or private institutions of higher learning.

The new program will appeal to (1) environmental, natural resources professionals who are either dealing with legal challenges through their work, or who want the program for promotion

(2) undergraduate students seeking to enhance their credentials in preparation for studying environmental and/or natural resources law, and (3) undergraduates who are looking to enter into the environmental and natural resource management field professionally.

Because much of the curriculum is based upon existing course offerings, shifts faculty and course offerings both in the Department and across campus should not create additional faculty needs for the Certificate Program. No additional faculty or staff will be required, and there is no projected additional cost to the program.

## **1. Program Description and Purpose**

*a. What is the program and why should we offer it? Include the program's major goals (both primary and secondary, if any).*

UNM's Department of Geography has a unique strength in that three of its eight faculty (eventually two of eight) have J.D.'s and several other members of the faculty have expertise in legal history and natural resource management. The department is working to capitalize on this strength by creating a new graduate certificate using entirely existing campus resources and faculty. The primary goal of the project is provide new opportunities for undergraduate, graduate and law students at UNM who are interested in education and training in law and natural resource policy and management. Its secondary goal is to enhance the Department's reputation as a national leader in the growing field of legal geography.

*b. How does the program fit within the unit's future plans?*

This proposed certificate is part of a broader Departmental effort to develop a focus in the area of Law, Environment, and Geography by capitalizing on existing campus-wide resources. This effort also includes a recently approved undergraduate minor in Law, Environment, and Geography, and a proposed "3/2" five-year combined economics undergrad major and geography minor and M.S. focused largely on future environmental managers. When and if these programs are all approved, further development toward a Joint JD & Masters in Geography will be explored.

*c. How does the program fit within the UNM mission and strategic plan?*

By creating a unique, professionally relevant, and intellectually rich educational path, the proposed plan would fit UNM's vision statement of:

- offering New Mexicans access to a comprehensive array of high quality educational, research, and service programs
- serving as a significant knowledge resource for New Mexico, the nation, and the world; and
- fostering programs of international prominence that will place UNM among America's most distinguished public research universities.

It would also capitalize on the strategic advantage articulated in that vision statement by capitalizing on UNM's location in a natural "laboratory for environmental, water, health, and other research and educational opportunities." Finally, it would offer an "area of marked distinction," as envisioned by UNM's Strategic Plan.

*d. How does the program fit with related offerings at UNM?*



At present, this offering would be unique on the UNM campus and in New Mexico. That said, it would offer a natural transition for undergraduate students in Sustainability, Biology, Engineering, and Community and Regional Planning who are considering a career in Law and/or Environmental Management.

*e. Assuming timely approval, what is the program development and implementation timeline?*

Assuming timely approval, the certificate could be developed and implemented by the time it is incorporated in the next University Catalog.

*f. Describe the curriculum (including coursework and other degree requirements). Discuss any new courses and the impact of the curriculum on existing courses, including courses in other departments.*

The curriculum would be based upon already existing courses. Twelve Credit Hours would be taken from existing offerings within the Department of Geography and Environmental Studies. An additional six Credit Hours of electives would be required from a list of approved courses from American Studies, Economics, History, Community and Regional Planning, and the Law School. All of these programs have been contacted and enthusiastically support the proposed curriculum. Because the curriculum depends solely on existing classes, and because the certificate program will likely involve a modest enrollment in the immediate future, the impact on existing courses should be fairly minimal.

The proposed curriculum for the program is as follows:

The Graduate Certificate in Law, Environment, and Geography requires 18 credit hours of upper-division course work.

REQUIRED GEOGRAPHY COURSE	Credit Hours
GEOG517 – Law and Geography	3

ELECTIVE GEOGRAPHY COURSES - 9 Credit Hours from the following offerings:

	Credit Hours
GEOG514 – Natural Resources Management	3
GEOG515 – Cultural and Political Ecology	3
GEOG561 – Environmental Management	3
GEOG562 – Water Resources Management	3
GEOG563 – Public Lands Management	3
GEOG564 – Food and Natural Resources	3

ELECTIVE NON- GEOGRAPHY COURSES - 6 Credit Hours from the following offerings:

	Credit Hours
AMST 520 – Topics in Environment, Science and Technology	3
AMST 523 – Environmental Justice	3
ECON 542 – Topics in Environmental, Resource, and Ecological Economics	3
ECON 545 – Water Resources II: Water Modeling	3
ECON 546 – Water Resources I: Contemporary Issues	3

HIST 633 – US Environmental History	3
HIST 638 – American Legal History	3
CRP 515 – Natural Resources Field Methods	3
CRP 527 - Watershed Management	3
CRP 532 – Foundations of Natural Resources	3
LAW 547 – Water Law	3
LAW 554 – Indian Water Law	3
LAW 565 – Natural Resources	3
LAW 575 – Western Water Policy	3
LAW 578 – Natural Resources: Indian Country	3
LAW 580 – Environmental Law	3
LAW 593 – Topics in Law*	3
LAW 635 – Land Use Regulation	3

\*Topics must be approved by Director of the Certificate Program in advance

All participating programs have been contacted and enthusiastically support the proposed curriculum. Supporting faculty contacts for these programs include:

- Alex Lubin: American Studies
- Bill Flemming: Community and Regional Planning
- Janie Chermak: Economics
- Reed Benson: Law
- Charlie Steen: History

## 2. Justification for the Program

### a. Evidence of Need

The Bureau of Labor Statistics' *Occupational Outlook Handbook 2010-2011* projects job growth for Social Scientists to be "much faster than average," which equates to more than a 20% increase between 2008-2018.<sup>1</sup> However, the growth projections vary, depending on the specific occupation. That same resource indicates that continued expansion of employment in the traditionally strong legal sector will be spearheaded by increasing demand for environmental law specialists. The UNM Geography & Environmental Study Program is well situated to capitalize upon these trends by providing a unique educational program that provides interested undergraduates with a clear path to graduate and/or law school and a distinct, employable degree. Moreover, faculty has encountered a number of undergraduate students who are looking for a career path that encompasses their interests in geography and environmental regulation who have expressed an interest in the proposed certificate program. Moreover there is a particularly strong need in New Mexico and the U.S. Southwest for professionals and researchers with experience in the areas of environmental law, regulation, and policy, given the region's longstanding challenges managing groundwater, and leadership in renewable energy resources.

---

<sup>1</sup> <http://www.bls.gov/oco/ocos315.htm> (last accessed 11/05/2010).

*b. Duplication*

There are no other even remotely similar programs offered in New Mexico public or private institutions of higher learning. The only similar program available to New Mexico students through the WICHE professional student exchange or WICHE regional graduate program is the University of Colorado, Boulder's "Graduate Certificate in Environment, Policy, and Society." A statement of position regarding this proposal has been solicited from that program. While we have had some feedback from faculty in this program, nobody in the program could identify its Director or provide a formal position statement.

**3. Inter-institutional Collaboration and Cooperation**

At this time, there are no substantial opportunities for collaborative relationships with other institutions for shared instruction, faculty arrangements, or student experiences. Such opportunities will likely arise once the proposal is approved, and faculty members are actively teaching to graduate certificate students.

**4. Clientele and Projected Enrollments**

*a. Clientele*

The new program will appeal to (1) environmental, natural resources professionals who are either dealing with legal challenges through their work, or who want the program for promotion (2) undergraduate students seeking to enhance their credentials in preparation for studying environmental and/or natural resources law, and (3) undergraduates who are looking to enter into the environmental and natural resource management field professionally.

Admission requirements will parallel those for admissions requirements for admission to the existing Departmental masters program in the and will be based on a combination of academic records, either GRE or LSAT scores, and professional/life experience.

Recruitment will take place through the UNM Department of Geography and Environmental Studies website, through announcements on the UNM hosted "Legal Geography" listserv, and through periodic targeted emails to undergraduates at UNM and other appropriate academic programs in the region. Recruitment for the Certificate program will duplicate departmental efforts to reach underrepresented student populations within the state, thus contributing to preparing a diverse workforce.

*b. Projected Enrollment*

Enrollment in the new program has been projected for the first five years based on historic enrollment trends for the Geography graduate program as a whole. In the past six years, the Department has added 9 new faculty, and has engaged in an ongoing strategic planning process to both capitalize on these hires and to strengthen the department's position within the discipline and the region. The departmental recognition and commitment to a focus on Law, Environment, and Geography – including the proposed program – is a result of this strategic planning process.



Accordingly, we anticipate a similar rate of growth in enrollment for the first five years of the project as we have seen with the graduate program as a whole during this period of expansion. Graduate enrollments have steadily grown from 12 during 2008-2009 to 25 during 2011-2012, for an approximate 25% growth rate per year. Likewise, we base the ratio of returning students to new students on historical data from the graduate program as a whole, with approximately 25% of our graduate cohort made up of returning students. Because the program has historically drawn very few part-time students, we are likewise assuming that there will be few if any part time certificate students in the first five years. Finally, we assume a conservative and rough initial cohort of 5 students based on an estimate of existing grad students who would have likely been interested in pursuing the proposed certificate program.

Year	New Students	Returning Students	Full Time	Part Time	Student Credit Hours
1	4	1	5	0	90
2	5	1	6	0	108
3	6	2	8	0	144
4	7	3	10	0	180
5	8	3	11	0	198
TOTAL	30	10	40	0	720

## 5. Institutional Readiness for the Program

a. *How many faculty are necessary for program delivery?*

This program will rely upon two faculty members in the Department of Geography and Environmental Studies to offer core classes, and administer the program, Melinda Harm Benson and John Carr.

b. *How will this program affect the workload of current faculty and support staff?*

Because much of the curriculum is based upon existing course offerings, faculty and course offerings both in the Department and across campus should not create additional faculty needs for the Certificate Program. The program will increase the workload for the two faculty members primarily charged with running it, but this would be within the normal expectations for faculty service. There may be some small increase in staff workload in handling admissions matters, and entering appropriate information for tracking student progress through the program.

c. *Will additional faculty or staff be required? What is the cost?*

No additional faculty or staff will be required, and there is no projected additional cost to the program.

d. *Will any GA/TA positions be used to assist graduate faculty in the program?*

No GA/TA positions be needed to assist graduate faculty in the program, unless faculty decide to seek grant funding for such positions.

e. *What faculty and staff development services will be needed?*

No additional faculty and staff development services will be needed.

f. *What technology, media, equipment and instructional supplies are needed to support the program's intended outcomes? Are these resources available? What is the estimated cost?*

There will not be any need for additional technology, media, equipment or instructional supplies to support the program's intended outcomes.

g. *Are there any needs for additional or renovated space?*

There will not be any need for additional or renovated space

h. *What, if any, existing external facilities will be used?*

No existing external facilities will be used.

## **6. Projected Cost of the Program**

Because the program is based entirely on existing course offerings and existing faculty service, there are no projected program costs, new revenue sources needed, or course fees or other expenses for students to cover. Thus, for each of the first five years of the program, no program costs are anticipated, nor is there any anticipated state support based on the state funding formula or any other areas of support.

## **7. Quality of the Program**

a. *Describe the qualifications of the faculty and how the expertise and experience will contribute to the quality of the program.*

As mentioned above, UNM's Department of Geography has a unique strength in that three of its eight faculty have J.D.'s (Professors Harm Benson, Carr, and Olen Paul Matthews) and several other members of the faculty have expertise in legal history and natural resource management. This concentration of geographers with legal degrees is unmatched nationally. Moreover, the growing strength of programs across the UNM Campus that focus on environmental and sustainability issues will ensure that Graduate Certificate students receive an outstanding quality education.

b. *Show how the proposed admission standards (identified in Section 1) compare with those of other institutions offering a similar program.*

The admission standards for the Graduate Certificate, which will parallel those for the existing Masters Degree program, will help ensure the quality of the program by limiting admissions to particularly strong candidates. These standards are in keeping with the nearest comparable program, namely the University of Colorado, Boulder's "Graduate Certificate in Environment, Policy, and Society" which requires admission to an existing graduate or pre-professional degree at UC Boulder for admission to the Certificate program.

c. *What instructional model(s) will be used in presenting the program? What types of*

*technology will be used for delivery of instruction?*

The program will piggyback on existing departmental graduate program instructional models, as it is premised on existing offerings.

*d. What types of opportunities for experiences outside of the classroom will be available to students and utilized in the program (e.g., internships, service learning projects, research-based service learning)?*

The opportunities for experiences outside the classroom for students will likewise parallel such opportunities in existing offerings.

*e. What student support services are likely to be needed and to what extent (CAPS, library, ITS, advising, etc.)? What is the estimated cost?*

We project the proposed program will impose a minimal requirement on student support services, with no additional student support costs.

*f. What student support will be needed (GA & TA positions, scholarships, internships, etc.)?*  
There will not be a requirement for student support.

*g. What are the expected student learning outcomes for the program? What will the students know and what will they be able to do when they complete this program?*

Student learning outcomes will include the following:

- A.1. Students will identify appropriate environmental issue for research
- A.2. Students will use legal research
- B.1. Students will State how a LEG research project fits within the relevant literature
- B.2. Students will explain and assess their research

*h. How will the program's learning outcomes be measured?*

These learning outcomes will be measured by an evaluation of the final research project in the capstone course. This will serve as the final integrating experience that will be used to assure graduates have acquired the knowledge and skills expected for the certificate awarded.

*i. Statement regarding accreditation.*

UNM is institutionally accredited by the Higher Learning Commission of the North Central Association and has approval to offer any degree program appropriate to UNM's mission. There will be no additional accreditation sought for the program, and thus there will be no additional accreditation processes or costs. Nor is the program projected to affect any existing accreditation or licensure requirements.

## **8. Assessment of Operations and Impact**

In addition to student learning outcomes, the Department will conduct periodic evaluations of where Certificate Program graduates are placed, and conduct informal surveys of graduates.

As part of the Department's current long-range plan for assessment, the Certificate Program will be included in the annual "Assessment Committee" analysis and reporting process.



This committee is charged with the annual gathering and analysis of assessment data for all degrees and programs offered by the Department of Geography and Environmental Studies, including a quantitative analysis of capstone projects such as those that will be used to measure the program's learning outcomes. This process will continue for the next five years and beyond.

#### **9. Administrative Responsibility for the Program and Institutional Commitment**

The governance of the program will be handled by the two primary faculty members, with annual reporting to, and oversight by the faculty of the Department of Geography and Environmental Studies as a whole.

## **Graduate Certificate in Law, Environment, and Geography**

Program Director: John Carr

The Certificate in Law, Environment, and Geography seeks to provide students both tools and analytic frames for understanding the spatial and legal dimensions of environmental dynamics and challenges. While the law can be a powerful tool for addressing issues of environmental regulation and resource management, the ways we write and enforce our laws can substantially impact environmental dynamics. The spatial dimensions of these impacts, and the inherent spatiality of legal regulatory concerns are pressing concerns for environmental researchers and policy makers. By offering a curriculum that stresses these interconnections the Certificate in Law, Environment, and Geography empowers students to ask critical questions about the how human regulation and environmental dynamics play out at a variety of scales.

### **Admission requirements and qualifications**

Students must be either

- currently enrolled in one of the graduate programs in the School of Arts and Sciences, with a minimum GPA of 3.0;
- possess a professional degree in geography, law, environmental science, or environmental management; or
- graduate students currently enrolled in other programs, and individuals without one of the degrees listed in #2 may be admitted by the Certificate Director upon demonstration of adequate preparation, skills, and aptitude.

Students who are not currently enrolled as degree seeking graduate students at the University must apply to and be accepted for admissions by the Department of Geography and Environmental Studies.

Application deadlines for the Certificate in Law, Environment, and Geography are: November 1 for the Spring semester and March 1 for the Fall semester.

### **Application submission requirements**

- A Curriculum Vitae
- A statement of intent outlining your goals in pursuing the Certificate, proposed program of studies, and schedule for completion.
- A writing sample of no more than five 8.5"-x11" pages.
- A current academic transcript.
- Either GRE or LSAT scores from the previous five years.
- Names and contact information for two people who can speak to your qualifications for the certificate program.

These materials should demonstrate (1) serious initial investigation and/or interest in environmental law and/or regulatory issues, (2) strong academic credentials, (3) ability to write cogently, and (4) a clear and compelling set of goals.

The director for the graduate certificate in Certificate in Law, Environment, and Geography may waive any of the above requirements if the application as a whole demonstrates that the student has the skills, background, and ability to successfully complete the Certificate.

## Curriculum Core Requirements

The Graduate Certificate in Law, Environment, and Geography requires 18 credit hours of upper-division course work.

A. REQUIRED GEOGRAPHY COURSE	Credit Hours
GEOG517 – Law and Geography	3

### B. ELECTIVE GEOGRAPHY COURSES - 9 Credit Hours from the following offerings:

	Credit Hours
GEOG514 – Natural Resources Management Seminar	3
GEOG515 – Cultural and Political Ecology	3
GEOG561 – Environmental Management	3
GEOG562 – Water Resources Management	3
GEOG563 – Public Lands Management	3
GEOG564 – Food and Natural Resources	3

### ELECTIVE NON- GEOGRAPHY COURSES - 6 Credit Hours from the following offerings:

	Credit Hours
AMST 520 – Topics in Environment, Science and Technology	3
AMST 523 – Environmental Justice	3
ECON 542 – Topics in Environmental, Resource, and Ecological Economics	3
ECON 545 – Water Resources II: Water Modeling	3
ECON 546 – Water Resources I: Contemporary Issues	3
HIST 633 – US Environmental History	3
HIST 638 – American Legal History	3
CRP 515 – Natural Resources Field Methods	3
CRP 527 - Watershed Management	3
CRP 532 – Foundations of Natural Resources	3
LAW 547 – Water Law	3
LAW 554 – Indian Water Law	3
LAW 565 – Natural Resources	3
LAW 575 – Western Water Policy	3
LAW 578 – Natural Resources: Indian Country	3
LAW 580 – Environmental Law	3
LAW 593 – Topics in Law*	3
LAW 635 – Land Use Regulation	3

\*Topics must be approved by Director of the Certificate Program in advance

All electives should be chosen in consultation with the Certificate Director.

Only 3 hours of coursework taken as Credit/No Credit may be applied towards the Certificate.

DEPARTMENT OF GEOGRAPHY & ENVIRONMENTAL STUDIES

PROPOSAL FOR GRADUATE CERTIFICATE IN "LAW, ENVIRONMENT, AND  
GEOGRAPHY"

**Library Impact Statement**

Because the proposed program is based on existing courses and curricular material, no additional impact on library resources is anticipated.



## DEPARTMENT OF GEOGRAPHY & ENVIRONMENTAL STUDIES

### PROPOSAL FOR GRADUATE CERTIFICATE IN "LAW, ENVIRONMENT, AND GEOGRAPHY"

#### Formal Needs Assessment

The Bureau of Labor Statistics' *Occupational Outlook Handbook 2010-2011* projects job growth for Social Scientists to be "much faster than average," which equates to more than a 20% increase between 2008-2018.<sup>1</sup> However, the growth projections vary, depending on the specific occupation. That same resource indicates that continued expansion of employment in the traditionally strong legal sector will be spearheaded by increasing demand for environmental law specialists. The UNM Geography & Environmental Study Program is well situated to capitalize upon these trends by providing a unique educational program that provides interested undergraduates with a clear path to graduate and/or law school and a distinct, employable degree. Moreover, faculty has encountered a number of undergraduate students who are looking for a career path that encompasses their interests in geography and environmental regulation who have expressed an interest in the proposed certificate program. Moreover there is a particularly strong need in New Mexico and the U.S. Southwest for professionals and researchers with experience in the areas of environmental law, regulation, and policy, given the region's longstanding challenges managing groundwater, and leadership in renewable energy resources.

---

<sup>1</sup> <http://www.bls.gov/oco/ocos315.htm> (last accessed 11/05/2010).

DEPARTMENT OF GEOGRAPHY & ENVIRONMENTAL STUDIES

PROPOSAL FOR GRADUATE CERTIFICATE IN "LAW, ENVIRONMENT, AND  
GEOGRAPHY"

**List of similar programs (state and regional).**

University of Colorado, Boulder: "Graduate Certificate in Environment, Policy, and  
Society."

DEPARTMENT OF GEOGRAPHY & ENVIRONMENTAL STUDIES

PROPOSAL FOR GRADUATE CERTIFICATE IN "LAW, ENVIRONMENT, AND  
GEOGRAPHY"

**Graduate Program Projected Costs**

Because the proposed program is based on existing courses and curricular material, and will be administered by existing faculty and staff as part of their normal workload, no additional program costs are anticipated.

DEPARTMENT OF GEOGRAPHY & ENVIRONMENTAL STUDIES

PROPOSAL FOR GRADUATE CERTIFICATE IN “LAW, ENVIRONMENT, AND GEOGRAPHY”

**List of Potential Employers**

- Law Firms
- Engineering Firms
- Environmental Firms
- Environmental Compliance Departments of Private Industries
- US Forest Service
- US Parks and Wildlife
- Environmental Protection Agency
- State Parks Departments
- State and Federal Level Legislative Staff
- Environmental Non-Governmental Organizations



## *Department of Economics*

Date: November 8, 2012

To: John Carr

From: Janie M. Chermak, Chair of Economics

RE: Law, Environment, And Geography Graduate Certificate

---

The UNM Department of Economics supports the Department of Geography's proposal for the creation of a one-year graduate certificate. The proposed certificate can provide students with a unique specialization in legal geography and analytic tools for policy analysis. Because of its interdisciplinary nature, the program provides the potential for additional synergies between several departments, through course work and faculty collaboration.



**From:** Ric Richardson <jrich@unm.edu>  
**Date:** August 3, 2012 11:02:11 AM MDT  
**To:** John Carr <carrj@unm.edu>  
**Cc:** Bill Fleming <ffleming@unm.edu>  
**Subject:** **Re: Geography Grad Certificate Proposal**

Hi John,

Thank you for the update. Your certificate proposal looks great and you have my support as always. In terms of the CRP courses, I'd like you to visit with Bill Fleming about courses to be listed from CRP. For instance, the CRP 524 course is not presently being offered and because we've hired a new faculty member, we're offering other really interesting electives. Our new faculty member is Caroline Scruggs, who has her PhD from Stanford in their interdisciplinary environmental policy program. She is terrific and I'd like you to meet her. I don't recall if you and I talked about Bill's role as coordinator of CRP's concentration in natural resources. Bill should be listed as the contact person in CRP.

Also, on the news front, Teresa Cordova retired from UNM and accepted a prestigious position directing the Great Cities Institute at UIC, and I've been appointed Director of the CRP program. So I'm up to my ears in a new life at UNM.

Let's find time to catch up. Coffee or lunch would be great.

My best,

Ric

Aug 2, 2012, at 9:59 AM, John Carr wrote:  
Ric,

I am writing to update you about the status of a Grad Certificate that I discussed with you about two years ago. As you may remember, the Geography Department is putting together a proposal for a one-year Certificate in Law, Environment, and Geography. As part of our proposal, we have included a number of CRP courses as electives for this certificate. And you had graciously supported this proposal in principle.

After a fair amount of administrative wrangling, we are within a week or so of submitting this to the Faculty Senate. Before we do so, however, I wanted to give you a chance to look over our proposal for any feedback you may have before we formalize our submission. I have attached the current draft for your review.

Thank you again for your support of our efforts.

I hope that you are enjoying a restful and engaging summer!

Cheers!!!

John Carr, J.D., Ph.D.  
Assistant Professor  
Department of Geography  
University of New Mexico

<LEG Grad Certificate Proposal 01.doc>

**From:** Gabriel Melendez <gabriel@unm.edu>  
**Date:** August 17, 2012 3:02:01 PM MDT  
**To:** John Carr <carrj@unm.edu>  
**Subject:** **Re: Geography Grad Certificate Proposal**

John-- American Studies is fine with the proposed certificate.

GM

On Aug 9, 2012, at 10:47 AM, John Carr wrote:  
Many thanks!

Cheers,

John

On Aug 9, 2012, at 10:07 AM, Gabriel Melendez wrote:  
Hi John-- I am forwarding the proposal to the department's executive committee for review. I will get back to you once the committee has weighed in on this matter.

Best,  
On Aug 6, 2012, at 1:57 PM, John Carr wrote:  
Professor Melendez,

About two years ago, Alex Lubin and I began discussing the Geography Department's proposal for a one-year Grad Certificate in Law, Environment, and Geography. We had wanted to include a number of American Studies courses as electives for this certificate, and Alex had supported this proposal in principle.

After a fair amount of administrative wrangling, we are within a week or so of submitting this to the Faculty Senate. Before we do so, Alex suggested that I give you an opportunity -- as acting Chair of American Studies -- to look over our proposal for any feedback you may have before we formalize our submission. I have attached the current draft for your review. My previous correspondence with Alex is also copied below.

Thank you in advance for considering our proposal.

Cheers!

John Carr

<LEG Grad Certificate Proposal 02.doc>

Begin forwarded message:

**From:** Alex Lubin <[alubin@unm.edu](mailto:alubin@unm.edu)>

**Date:** August 2, 2012 10:38:01 AM MDT

**To:** John Carr <[carrj@unm.edu](mailto:carrj@unm.edu)>

**Subject: Re: Geography Grad Certificate Proposal**

Dear John,

This looks fine to me; but since i'm on leave from UNM until Fall 2013, I think it would be best to discuss this with Gabriel Melendez, the current Chair of American Studies.

Regards,  
Alex

On Aug 2, 2012, at 8:57 AM, John Carr wrote:  
Alex,

I am writing to update you about the status of a Grad Certificate that I discussed with you about two years ago. As you may remember, the Geography Department is putting together a proposal for a one-year Certificate in Law, Environment, and Geography. As part of our proposal, we have included a number of American Studies courses as electives for this certificate. And you had graciously supported this proposal in principle.

After a fair amount of administrative wrangling, we are within a week or so of submitting this to the Faculty Senate. Before we do so, however, I wanted to give you a chance to look over our proposal for any feedback you may have before we formalize our submission. I have attached the current draft for your review.

Thank you again for your support of our efforts.

Cheers!

John Carr, J.D., Ph.D.

Assistant Professor  
Department of Geography  
University of New Mexico

---

Alex Lubin  
On leave, University of New Mexico  
Associate Professor  
American Studies

John Carr, J.D., Ph.D.  
Assistant Professor  
Department of Geography  
University of New Mexico

A. Gabriel Meléndez  
Chair of American Studies  
419 Humanities Bldg.  
phone: 277-6357  
messages: 277-3929  
[gabriel@unm.edu](mailto:gabriel@unm.edu)

John Carr, J.D., Ph.D.  
Assistant Professor  
Department of Geography  
University of New Mexico

A. Gabriel Meléndez



Chair of American Studies

419 Humanities Bldg.

phone: 277-6357

messages: 277-3929

[gabriel@unm.edu](mailto:gabriel@unm.edu)

To: Diane L. Marshall, Associate Dean for Curriculum and Instruction  
From: John Carr  
Re: Form D for Graduate Certificate in "Law, Environment, and Geography".  
Date: October 31, 2012

Please find below and attached our responses to your requests for minor modifications to the Form D to address the questions of the College Curriculum Committee

1. How often are relevant courses in the Law School offered? You might include some information from the course availability in the last couple of semesters.
  - a. The following information has been provided by Assistant Dean William Jackson, Registrar for the Law School:

School of Law courses are typically grouped by likelihood of the frequency of offering:

<u>Group A – a course likely to be offered each year</u>	<u>Last offered</u>
LAW 547 – Water Law	3 Fall 2012 - Benson
LAW 565 – Natural Resources	3 Fall 2011 - Benson
LAW 580 – Environmental Law	3 Fall 2011 - Gauna
LAW 593 – T: Intro to Natural Resources	2 Spr 2012 - Benson
<u>Group B – a course likely to be offered every other year</u>	
LAW 575 – Western Water Policy	3 Fall 2010 - Fort
LAW 578 – Natural Resources: Indian Country	2 Fall 2011 - adjunct
LAW 576 – Energy Law	3 Spr 2007 - Gauna
<u>Group C – a course likely to be offered less than every other year.</u>	
LAW 615 – Environmental Justice	3 Fall 2007 - unknown
LAW 536 – Endangered Species	3 - Spr 2008 - Fort
LAW 554 – Indian Water Law	3 Fall 2010 - adjunct
LAW 574 – Federal Public Lands and Resources Law	3 Spr 2007 - Fort
<u>Other special topic courses to be offered in 2013-2014</u>	
LAW 574 – Natural Resources Litigation Drafting	2 Spr 2013 - adjunct

2. Are seats available in these courses in the Law School for your proposed students? Some information on recent enrollment patterns in these courses would help.
  - a. According to Assistant Dean William Jackson, Registrar for the Law School, seats are typically available. The one reservation he noted is that LAW 575 "is sometimes offered as a seminar and then may have a restriction on the non-law students as the cap is typically 12."
  - b. Historic registration data from the last 7 semesters has been provided by Assistant Dean Jackson:

	LAW	2009 FALL	2010 SPR	2010 FALL	2011 SPR	2011 FALL	2012 SPR	2012 FALL
Water Law (3)	547	29		17		39		31
Natural Resources (3)	565	13		8		19		
Environmental Law (3)	580		23		15	20		
Intro to Natural Resources	593						31	
Western Water Policy	575			5				
Natural Resources Indian Country	578	11		5		8		
Energy Law	576							
Environmental Justice (2-3)	615							
Indian Water Rights (2-3)	554			8				
Federal Public Land & Resource Law (3)	574							

3. Are the courses that are required offered with sufficient frequency that the certificate can be completed in one year? Give some information from the last couple of semesters about course availability.
  - a. All required courses are projected to be offered on at least an annual basis for the next 5 years and beyond. Please see attached departmental course rotation. Please note that the attached rotation is an evolving document that is regularly revised to adjust for faculty leave, curricular needs, etc. That said, this tool is used to ensure that all core required courses will be covered for at least five years into the future.
4. Include emails/memos showing support from all of the departments that would be providing courses.
  - a. All support emails are attached hereto.
5. Please revise your assessment plan to say that “students will” do the expected outcomes, not that they will be able to (but perhaps not actually) do them.



- a. This change has been made in the newly updated draft of the Graduate Certificate Proposal, attached hereto