



Campus Development Advisory Committee – CDAC

DRAFT 2

Minutes – Special Meeting to Discuss ABQ Area Rapid Transit (ART) Project

Wednesday, November 16, 2016

1:00pm to 2:00pm

George Pearl Building

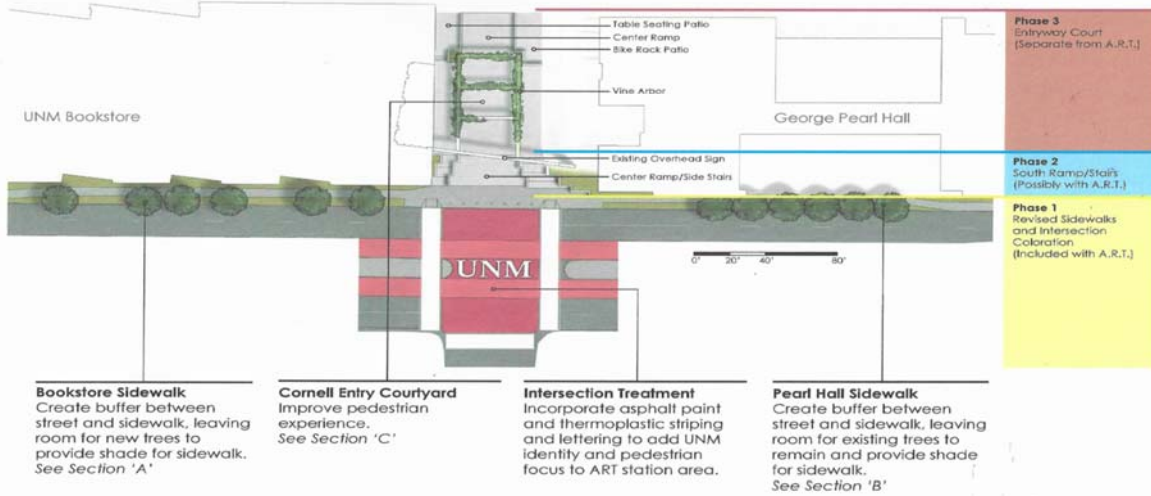
Attendees: (taken from sign-in sheet – for those who signed in)

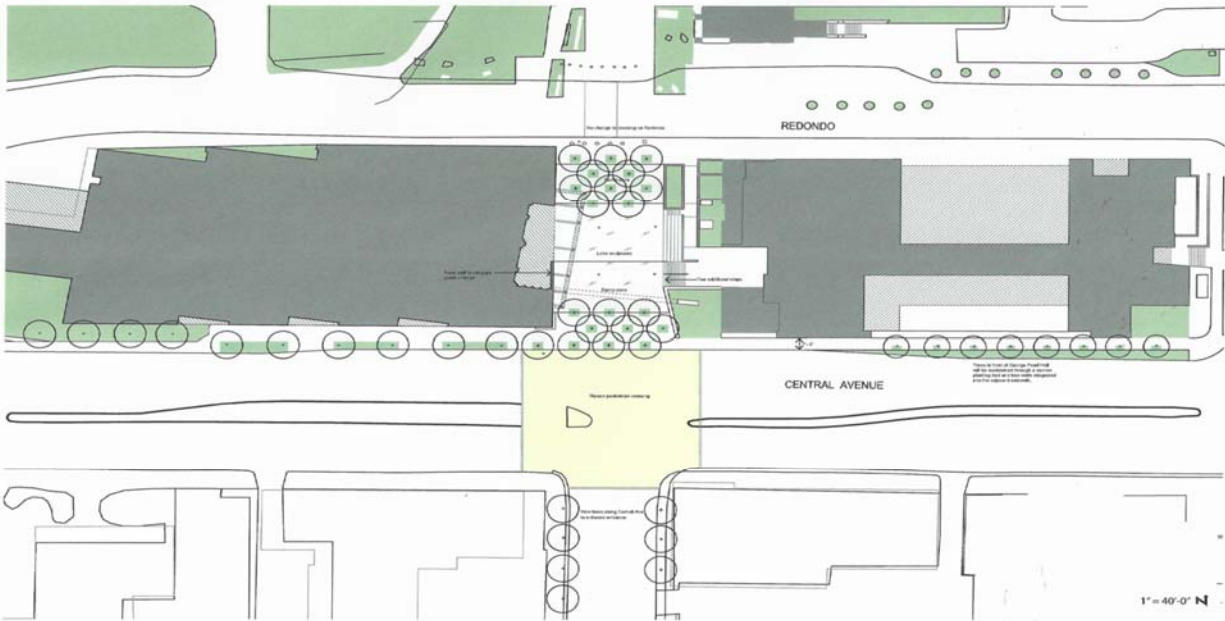
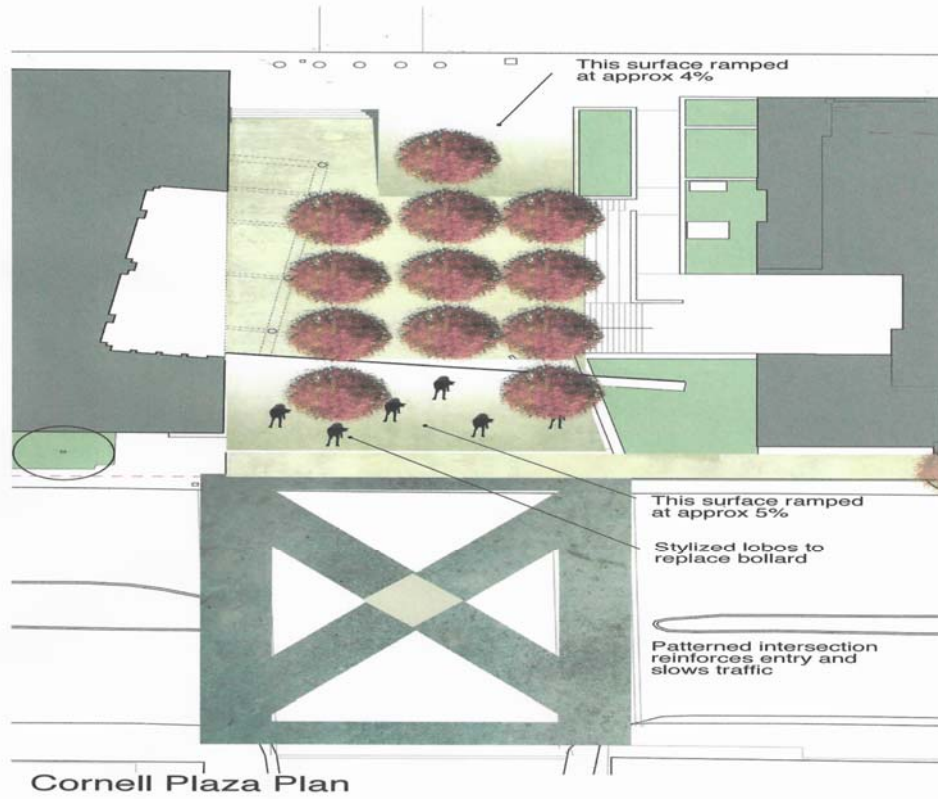
Steven Alan Yourstone	Anderson School of Management
Geraldine Forbes	Dean, School of Architecture & Planning
Melissa Vargas	Provost Office
Alfred Simon	School of Architecture & Planning
Dana Crawford	City of Albuquerque
Joan Green	Student Affairs, ARC
Michelle Peeples	Parking & Transportation
Dennis Dunn	University Secretary's Office
Thomas Neale	UNM Real Estate Director
Roger Schluntz	Professor School of Architecture & Planning
Lisa Marbury	UNM Institutional Support Services
Dayna G. Crawford	ABQ Ride Deputy Director
Tyler Nunn	Senior Project Manager, Bradbury Stamm
Pamela Pyle	Faculty Senate President

Meeting called to order – 1:10am by Steven Alan Yourstone

This meeting was called for during the October 7, 2016 CDAC meeting to discuss the Albuquerque Rapid Transit (ART) Project and its impact on UNM's Cornell Mall, especially the area between the UNM Bookstore and the George Pearl Architecture and Planning Building. Following introductions, Steven turned the presentation over to Alfred Simon, School of Architecture & Planning.

CORNELL MALL ENTRY COURTYARD & ADJUSTED A.R.T. SIDEWALK / INTERSECTION TREATMENTS







Campus Development Advisory Committee – CDAC

Points Covered:

- The design of the area between the Bookstore and the George Pearl Building was assigned to students of Architecture and Planning. Three designs were chosen for consideration.
- One of the main points in the new design was to improve the intersection that crosses Central Avenue, to slow down traffic.
- The ART Project will take approximately 6' – 8' of land along Central Avenue, causing problems for pedestrians due to a narrower sidewalk. This issue was discussed including the creation of a new ramp.
- Designs were presented for the plaza space between the Bookstore and the George Pearl Building. These designs included the use of lobo statues, new trees, and a possible vine trellis. These designs will be forwarded to the project architects.
- The cost of this project has yet to be determined. The next step will be to price the project out.
- These designs have been presented to the Board of Regents.
- This project will need to be coordinated with the city's ART Project.

Next Meeting: To Be Determined, based on upcoming projects.

Adjourned: 2:10pm.