

FACULTY SENATE SUMMARIZED MINUTES

2013-2014 FACULTY SENATE March 25, 2014

The Faculty Senate meeting for March 25 was called to order at 3:00 p.m. in the Roberts Room of Scholes Hall. Faculty Senate President Richard Holder presided.

ATTENDANCE

Guests Present: R. Scott Olds, Helen Walton – UNM Valencia, Deborah Helitzer-FCM SOM, Deanna Wall – Public Health, Amy Wohlert-Office of the President, Bill Wiese – FCM, Frank Kessel-COE, Melissa Binder-Economics, William Stanley-Political Science, Charlie Steen-Admissions and Registration, Robert Schwartz-School of Law, Kim Delky- School of Engineering, Joe Cecchi-Engineering, Tim Ward-Chemical and Nuclear Engineering, Avril Prinja-Chemical and Nuclear Engineering, Kristine Tollestrep- Family and Community Medicine, Tiffany Lee –Native American Studies, Alec Reber – Registrar's, Barbara Reyes-History/Women Studies, Alfred Mathewson-Africana Studies, Jamie Chermak-Economics, Maria Lane-Geography, Michaela Pride-Architecture and Planning

APPROVAL OF THE AGENDA

The agenda was approved as written.

1. Approval of summarized minutes for February 25, 2014 meeting

The minutes were approved as written with no abstentions.

2. Faculty Senate President's Report

From here on out there will be limited printed agenda's.

President Frank gave a state of the University address on its 125 birthday on February 28, 2014 that was well attended.

Faculty Senate President Richard Holder met with the Department of Internal Audit regarding faculty compliance with a Clery Act. A Clery Act requires the University to report crimes to the Federal Government that occur on campus on an annual basis. If a faculty sponsors a student trip or organization that faculty is a Safety Officer assigned by the Clery Act to take care of the students. More information will be sent regarding the Clery Act.

The UNM China Initiative continues, Faculty Senate President Richard Holder and Faculty Senate President – Elect Pamela Pyle has been working on forming an ad-hoc committee who will work on the curriculum with the proposal pending.

The under 65-retiree health insurance premium issue is still on-going. There have been several meetings that occurred to discuss the issues and to see how the under 65 retirees can be put back into the active employee pool. Faculty Senate President Richard Holder suggested that the Faculty Senate Benefits Committee Chair Fran Wilkinson report to the Faculty Senate at the April 22, 2014 meeting to give an update.

The Strategic Budget Leadership Team (SBLT) has been meeting regarding proposals from units requesting funding that were evaluated with some receiving funding but not all. Several scenarios were prepared for the Board of Regents for next year's budget. The SBLT voted that President Frank submit a budget that would include a 3% compensation raise for faculty and 2.5% for staff with a 3% increase in tuition. Faculty Senate President Richard Holder requested an 8% raise from the Board of Regents. At the Board of Regents meeting that was held this morning President Frank suggested recommendations that were a budget scenario that included a 3% raise for

faculty salaries and a 2% raise for staff salaries with a 1.5% raise in tuition. In order to give these increases for faculty and staff some funding proposals were denied.

The Board of Regents met on March 10, 2014 for the elections of Regents that is to be held every second Monday of every March. Jack Fortner was elected President of the Board of Regents, Conrad James was elected as Vice President of the Board of Regents and Bradley Hosmer was elected Secretary, Treasury of the Board of Regents. The Board of Regents announced that Past Faculty Senate President Amy Neel will replace Breda Bova as the Faculty NCAA Representative starting July 1, 2014.

The Board of Regents met this morning and spent about 4 hours debating various aspects of the budget a lot of comments were made by advisors and questions asked by the Board of Regents. The Board of Regents would like to be more involved in the deliberations of the budget then receiving the budget scenario the afternoon prior to their meeting. The issue is how to involve the Board of Regent when the SBLT meets weekly. Keeping them informed during the process is a challenge and the revenue isn't known by the SBLT until the legislature and the Governor signs that causes a delay. President Frank is going to work on this issue. There was enough interest by the Board of Regents with the information they received that they postponed their decision until Friday, March 28, 2014 they will consider and vote on next years budget.

3. President's Report

President Frank expressed his support regarding the proposal for the College of Population* Health.

President Frank reported on the Budget Summit meeting this morning. He expressed his full support regarding compensation for faculty and staff. He suggested faculty to write letters to the Board of Regent encouraging them to consider compensation increase. The Board of Regents are all in agreement in granting the compensation increase for staff and faculty but how to fund the increases is still be discussed.

4. Provost's Report

Provost Abdallah reported on the Budget Summit stating that the Board of Regents will reconvene on Friday, March 28, 2014 to vote on compensation and tuition. Earlier this year the Board of Regents requested for a 0% tuition scenario and a 1% tuition scenario. The Administration submitted those scenarios that were requested and included a 3% tuition scenario. For each scenario there were different priorities like spending cuts that had to be made. The 3% tuition scenario had 3% faculty raise and 2% for staff with funding the majority of the Academic Plan. The Board of Regents heard the comments and questions from students, staff and faculty at the Budget Summit. This year the Board of Regents requested that the SBLT only make a report on behalf of those who submitted proposals.

Innovate ABQ had two components with one of them being the Innovation Academy. The Office of Academic Affairs has a team that is across the University to review how to innovate in our education, how to innovate in college creativity and how to teach innovation. The Innovation Academic concept is to have a place where students, faculty and entrepreneurs meet and work around issues. The models that are being reviewed are from Stanford University and the Media Lab at MIT. Courses will be unstructured with faculty that has different backgrounds lecturing that will create a proposal that will become a project for that year or many years. IDEA will present on April 22, 2014 in the Rotunda located at the Science & Technology Park.

5. CONSENT AGENDA TOPICS

Form C from the Curricula Committee

The following Form C's were approved by voice vote of the Faculty Senate:

Undergrad Chinese Minor
Undergrad Bilingual Education Minor
Undergrad BS Health Education -School Health Education Concentration

Undergrad School Health Education Minor
Undergrad Split of ChNE dept
Undergraduate Chemical and Biological Engineering
Undergraduate Nuclear Engineering
Undergraduate BA Chicana and Chicano Studies
Undergraduate Minor in Sociology
Undergraduate BA Sociology
Undergraduate BA Criminology
Undergraduate Interdisciplinary Studies Minor
Graduate Master of Public Health Concentrations
Graduate Master of Public Health
Undergraduate Minor in Criminology
Graduate Doctor of Nursing Practice: NEOL Concentration
Undergraduate BA Interdisciplinary Liberal Arts
Undergraduate BA Art Studio
Undergraduate BFA Art Studio
Undergraduate French, French 2nd major, French minor
Undergraduate NEW) National Security and Strategic Analysis Certificate
Undergraduate Minor in Social Welfare

AGENDA TOPICS

6. Form C Undergraduate BA Native American Studies Core Course

Associate Professor of University College Native American Studies Tiffany Lee reported on the form C of Undergraduate BA Native American Studies Core Course. This is a request to add an introduction to Native American Studies course to the core. There will be students from across the University that will take this course to fulfill their requirements.

The Form C Undergraduate BA Native American Studies Core Course was approved by unanimous voice vote of the Faculty Senate.

7. Form C Chicana and Chicano Studies Core Course

Director of Chicana and Chicano Studies Irene Vasquez reported on the form C Chicana and Chicano Studies Core Course. This is a Core Course proposal for the Social Behavior Sciences for Africana Studies, Chicano Studies, Women Studies and Sustainability Studies. This course came out of an effort that was started among these programs about a year and a half ago to collaborate to create that the departments mentioned co-teach. The impact of this proposal would be to diversify the opportunity for students learning in the core and student exposure to diverse course materials and approaches to knowledge.

The Form C Chicana and Chicano Studies Core Course were approved by unanimous voice vote of the Faculty Senate.

8. Form C Africana Studies Core Course

Professor of School of Law Alfred Mathewson reported on the form C Africana Studies Core Course. The impact of this proposal would be to diversify the opportunities for student learning in the Core and student exposure to diverse course materials and approaches to knowledge. Furthermore, utilization of high impact practices is a major part of Africana Studies philosophy making it uniquely positioned to assist UNM in serving underrepresented undergraduate students as they complete a Core requirement in the area of the Humanities.

The Form C Africana Studies Core Course was approved by unanimous voice vote of the Faculty Senate.

9. Form D Master's in Public Policy

Director of the Institute for Social Research Melissa Binder reported on the Form D Master's in Public Policy.



THE MASTER OF PUBLIC POLICY @ UNM

A proposal for a new interdisciplinary
graduate degree offered by

The College of Arts and Sciences

Economics, Political Science and Sociology

& The School of Public Administration

The Goal

- Address policy challenges in New Mexico (and elsewhere), including economic uncertainty, high poverty rates, low graduation rates and drought.
- Train analysts who can serve the state by identifying and championing data-driven policy options.
- Contribute to improved decision-making in local and state government, Native communities, and the private and non-profit sectors by graduating professionals with excellent applied research, critical thinking, oral presentation and writing skills.

The Need

- Potential employers in State and Local governments have identified a strong need for professionals who can rigorously analyze policy, budget, and program issues.
- Desired skills include critical thinking, data analysis and interpretation, and oral and written communication.
- Officials in State agencies are keenly interested in developing a pipeline of well-trained students from this program to support the work of state government.

The Interest

One email invitation to Political Science and Economics students generated 42 survey responses

- 24 would definitely apply to program
- 16 would consider applying

For those interested, the most appealing aspects of the program were:*

- Working in the public policy field (88%)
- Having the opportunity to intern with an agency or research center (65%)
- Getting a specialty in one area of policy (45%)

*Students could choose three program aspects

THE PROGRAM

48 credit hours

CORE CURRICULUM (24 Credit Hours)

Key Competencies	Course offered by*	Credit Hours
Quantitative & Empirical Methods—A two-course sequence in Applied Econometrics	ECON, POLS or SOC	6
Economic Analysis of Public Policy	ECON	3
Organizational Behavior	SOC or PADM	3
The Political Context	POLS	3
Public Policy and Diversity	POLS, SOC or PADM	3
Public Management and Ethics	PADM	3
Financial Management	PADM	3

*All courses already exist. ECON=Economics, PADM=Public Administration, POLS=Political Science and SOC=Sociology.

SUBSTANTIVE SPECIALTY (15 credit hours)

Students will focus on building their own substantive specialty by taking five electives from a range of currently offered courses. Possible areas include:

- Crime and Justice
- Economic Development
- Education Policy
- Environmental Policy
- Health Policy
- International Security and Foreign Relations
- Native American Policy and Administration
- Politics and Elections

PRACTICAL TRAINING

(9 credit hours)

MPP SEMINAR & INTERNSHIP -- All MPP students will participate in an ongoing policy seminar (6 credits) which will develop leadership, writing, presentation and other professional skills and serve as the integrative capstone course in the final semester, and a public policy internship (3 credits) in order to gain hands-on experience. The seminar and internship will be provided through new courses.

POLICY MEMO – Students will write and present a substantive policy memo based on their internships, which will serve as their Master’s Examination. The policy memo requirement is similar to the professional paper requirement in other UNM programs.

Form D, Master of Public Policy Degree was approved by unanimous voice vote of the Faculty Senate.

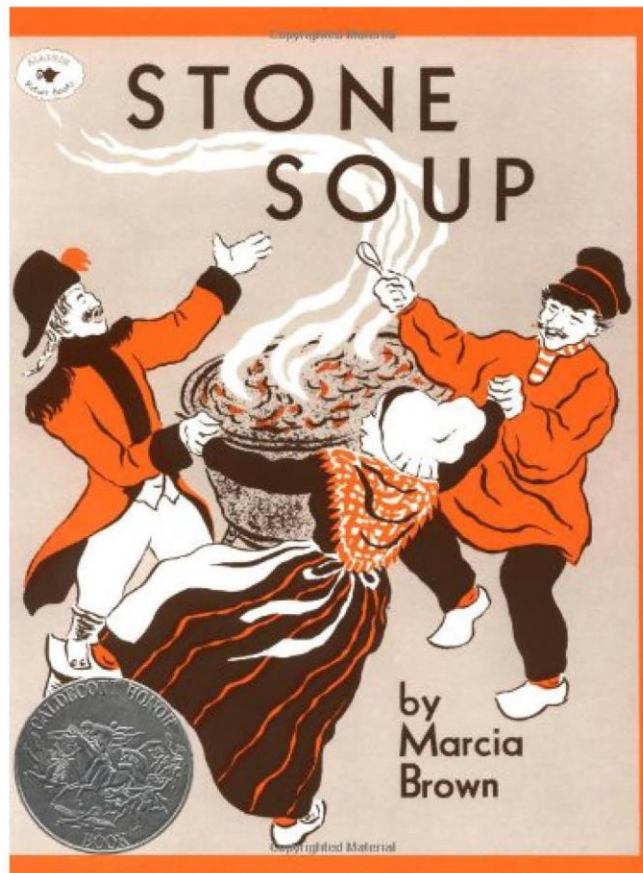
10. College of Population* Health

Associate Vice Chancellor for Research Education at the Health Science Center Deborah Helitzer reported on the proposal for the College of Population Health.

UPDATE ON PROPOSAL FOR UNM College of Population* Health

** The name “School of Public Health” is trademarked and cannot be used until accreditation documents are approved by CEPH.*





THE STATE (NM) OF HEALTH

- ✦ Overall mental health ranking is 44 out of 50
- ✦ Overall physical health ranking is 44 out of 50
- ✦ Ranks 49 out of 50 for the number of children in poverty
- ✦ Ranks 49 out of 50 for the number of healthcare uninsured residents
- ✦ Ranks last (50 out of 50) for access to adequate prenatal care
- ✦ Ranks last (50 out of 50) for teen birth rates

EXTERNAL ENVIRONMENT



2012 Legislative Session – HB ~~XXXX~~ introduced by Joseph Cervantes
“New Mexico State University should have a School of Public Health”

2012 House Memorial 43 Introduced by Joseph Cervantes
“Requesting HED study the feasibility of establishing a School of Public Health in NM”

2012 – HED Secretary reports to LFC that **it is feasible** to have a School of Public Health in NM, and NMSU and UNM should collaborate to do so

2013 Legislative Session – House Bill 69 Introduced by Mimi Stewart
“Making an appropriation to UNM HSC to plan a College of Public Health”-**Not Funded**

2013 – UNM and NMSU develop report about collaborative possibilities, but **do not come forward with a proposal for 2014 Legislative Session**

2014 Legislative Session – Senate Memorial 72 Introduced by Joseph Cervantes
“Requesting HED study the feasibility of establishing a School of Public Health in NM”

AKA: Will you please get us a proposal?



and



2012 – Paul Roth creates public health consortium to address request for feasibility study (HM43)

2012 – Negotiations between UNM and NMSU are interrupted by change in leadership at NMSU

2013-2014 – Leadership at NMSU stabilizes. Negotiations with NMSU resume and lead to agreement to collaborate. Proposal outlining potential collaborative activities is drafted.

2013-2014 – Negotiations between President Frank and President Carruthers (NMSU) evolve to a mutual agreement that there will be **two Schools of Public Health in NM:**

- **NMSU** will focus on Rural Health and Border Health
- **UNM** will focus on areas such as Urban Health/Healthy Communities (Innovate Albuquerque); Health Services, Management and Administration; Disaster Response; Health Policy; and Environmental Health/Toxicology



Public Health Program (PHP) in FCM (~12 faculty) offers MPH degree with 3 concentrations. Degree/Concentrations are accredited by Council for Education in Public Health (CEPH).

- MPH in Health Services and Policy
- MPH in Epidemiology
- MPH in Community Health

Since 2002 the PHP has graduated 157 students

56 faculty in 3 HSC Colleges have MPH degree, additional faculty have PhD-DrPH-ScD in Public Health

15 + HSC Centers with public health-related emphases



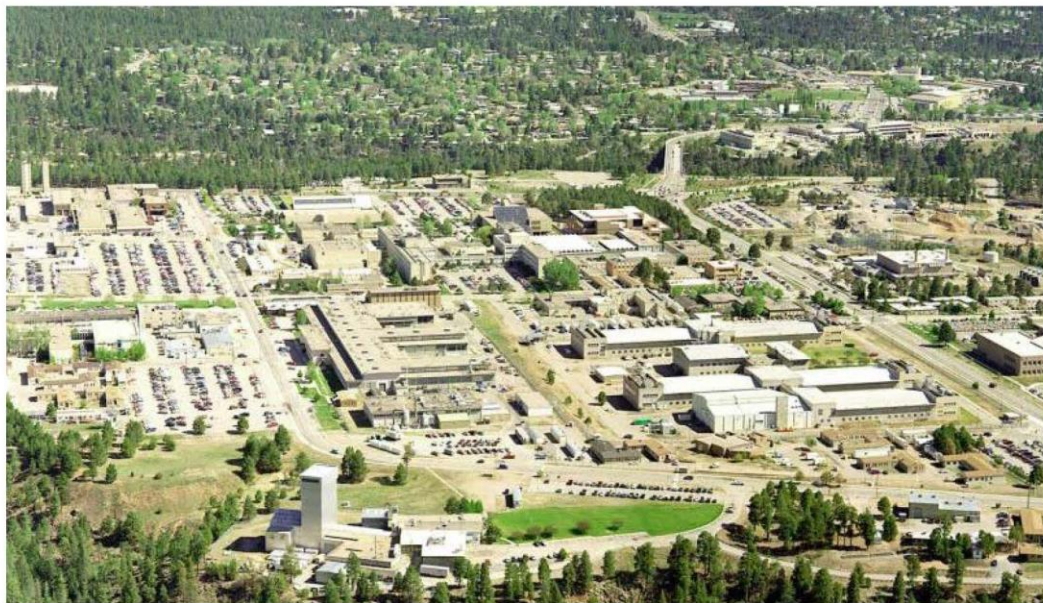
- **15 + Centers with public health-related emphases**
- **Approximately 85 courses in 8 Central Campus Colleges/Schools have public health relevance**
- **Strong desire by leaders, faculty, staff and students for an integrated Bachelors' degree program in public health**
- **All UNM Colleges/Schools have expressed interest to participate and some have identified faculty who can teach in the BSPH**
- **"UNM Core" course(s) and an Honors College course will be used as "introductions" to public health**

ALTERNATIVE PATHWAYS FOR STUDENTS

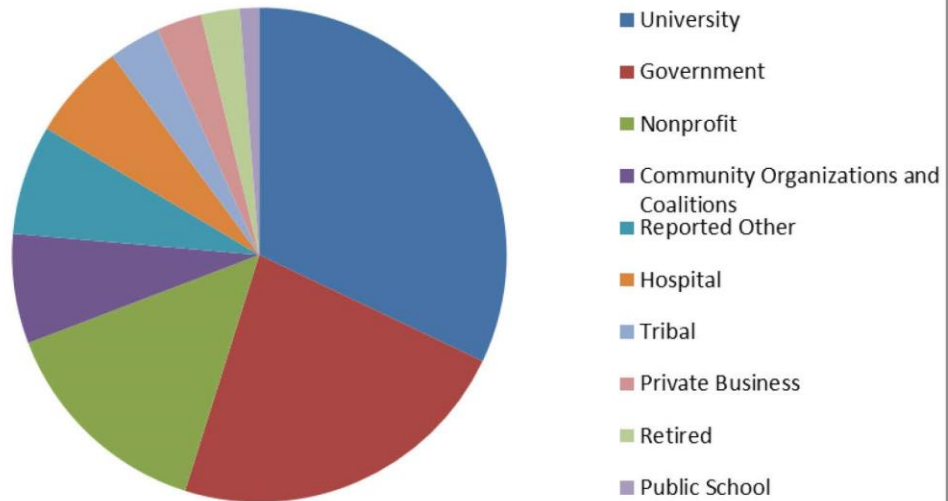
UNM Applicants 2011-2014		
UNM College/School	Application Completed	Offered Admission
College of Nursing Undergraduate Program	1032	583
College of Nursing Graduate Program	353	234
School of Public Administration Graduate Program	589	325
College of Pharmacy-PharmD Graduate Program	993	320
College of Pharmacy-PEPPOR Graduate Program	173	14
School of Medicine UME Program	4180	496*

*Admission for 2014 projected at 128

WORKFORCE STORY



New Mexico Public Health Association Members by Industry



GROWTH HAPPENS QUICKLY

	2010-2011	2011-2012	2012-2013	2013-2014
Kent State University*-Kent Ohio				
BSPH Matriculations	81	225	494	588
University of South Florida**-Tampa Florida				
BSPH Matriculations	308	667	984	943
	2001-2005	2006-2010	2011-2012	2013-2014
University of Arizona***-Tucson Arizona				
BSPH Matriculations	685	911	1027	Not Reported

*UG Enrollment 2014 = 18,772 @ Main Campus

**UG Enrollment 2014 = 30,425 @ Main Campus

***UG Enrollment 2012 = 31,565 @ Main Campus

CPH FINANCING MODEL

- Agreement with leadership that CPH will generate revenue from tuition, state revenue (I&G), extramural funding and other funds for BSPH, MPH and PhD degree programs.
- **A shared revenue and resources model will be developed.**
- CPH will charge a graduate tuition differential much like the College of Nursing to allow for funds to support strategic initiatives (**\$249/credit Masters and \$366/credit for Doctoral**)
- BSPH students will not pay a differential at the undergraduate level

One BSPH 3-credit hour course:

- 30 students = **\$21,172.50**
- 100 students = **\$70,575.00**
- 200 students = **\$141,150.00**
- **200 Students x 60 credits = \$2,823,000**
- **600 students = \$8,469,000**

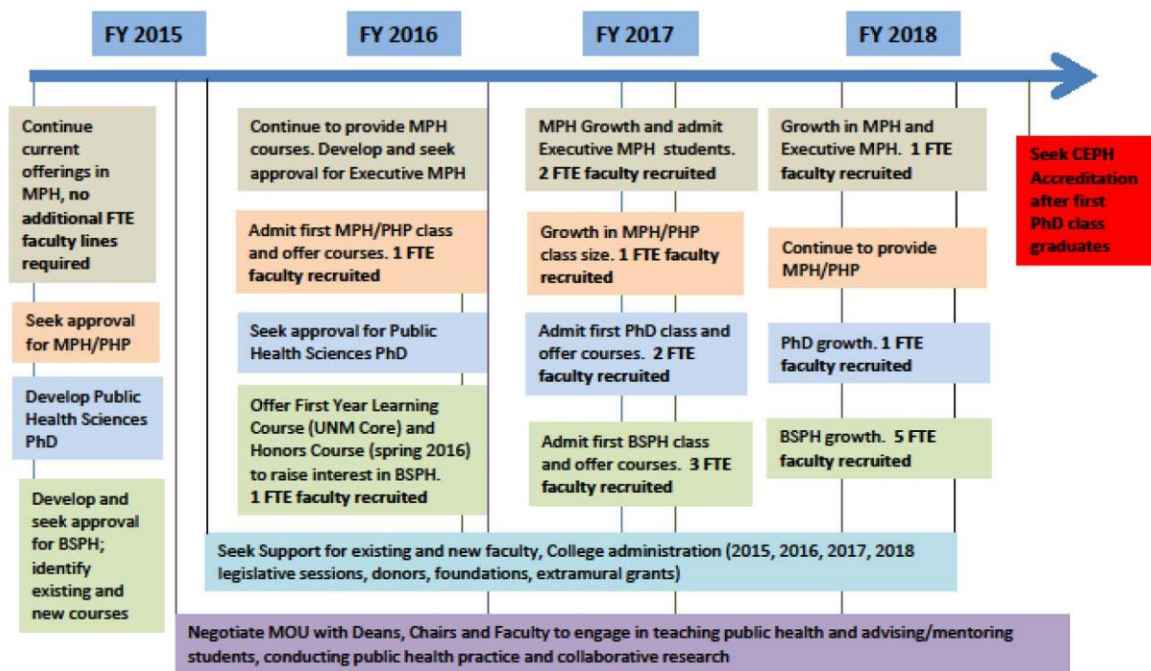
EXAMPLE OF A BSPH PROGRAM

Freshman/Sophomore

UNM Undergraduate Core	Credit Hours
Fine Arts	3
Humanities	6
Social and Behavioral Sciences	6
Writing and Communication	9
Mathematical Reasoning	3
Foreign Language	3
Scientific Methods in the Physical/Natural Sciences	7
Diversity Course (Under Consideration)	3
UNM Core Total	40
Public Health Electives	
Public Health-Related Courses (Required for application to CPH)	17
Electives Total	17

Junior/Senior

Public Health Core (Students accepted to BSPH program)	Credit Hours
Introduction to Public Health *Could be part of UNM Core	3
Health Challenges and Responses Across the Globe *Could be part of UNM Core	3
Essentials of Epidemiology	3
Introduction to Biostatistics	3
Public Health Research	3
Behavioral Theories in Public Health	3
Introduction to Environmental Health and Safety	3
Chronic Diseases	3
Communicable Diseases	3
Prevention Strategies in Public Health	3
Public Health Policy and Decision Making	3
Health Disparities	3
Public Health Core Total	36
Public Health Concentrations	
(One concentration is chosen, plus Field and Capstone Experiences)	
Health Services and Systems	15
The Built Environment (Architecture, Planning and PH)	15
Health Policy	15
Disaster Response	15
Environmental Health and Toxicology	15
Art and Health (Substance Abuse Prevention)	15
Field Experience	6
Capstone Experience	6
Public Health Concentration Total	27
BSPH Degree Total	120



Strategic Goal: By the end of FY18 the CPH will have 27 1.0 FTE faculty and multiple shared positions/revenue models. No Faculty will be “purged” from their current departments. Decisions about moving current or recruiting new MPH faculty will be made by FCM Chair and Chancellor after FY16.

APPROVAL PROCESS FY 2014

February 20 – HSC Faculty Council “endorsed” creation of a College of Population Health

March 4 – Faculty Senate Operations Committee endorses proposal and agrees to add it to the agenda for the Faculty Senate Meeting on March 25, 2014

March 13 – Presentation to the Strategic Budget Leadership Team (SBLT) for FY 15 budget

March 20 – Meeting with the School/College Deans

March 25 – Presentation to the Faculty Senate

Subsequent Steps:

- Administration Approval
- Regents Approval

EXTERNAL SUPPORT TO DATE

Albuquerque Area Southwest Tribal Epidemiology Center
Christus St. Vincent Hospital
Los Alamos National Labs
New Mexico Department of Health
New Mexico Department of Workforce Solutions
New Mexico Environment Department
New Mexico Health Connections
New Mexico Public Health Association
Santa Fe Community College
UNM Anderson School of Management
UNM Center on Alcoholism, Substance Abuse, and Addictions
UNM Honors College
UNM School of Public Administration

QUESTIONS?



Deborah Helitzer, Sc.D.
Professor, Family and Community Medicine
Associate Vice Chancellor for Research Education
Health Sciences Center
University of New Mexico

College of Population Health
 FY15 Implementation
 Budget Request

	FY15 Requested Implementation Budget
Salary Expenses	
Faculty Salaries	
Dean @ 1.0 FTE *	\$ 274,848
Undergraduate Program Director @ .30 FTE(\$137,614)	\$ 41,284
Graduate Program Director (Budgeted Under FCM)	
Fringe @ 29%	\$ 91,678
Subtotal Faculty Salaries	\$ 407,810
Staff Salaries	
Sr. Program Manager	\$ 71,556
Admin Assistant III (TBN)	\$ 33,114
Fringe @ 35%	\$ 36,635
Subtotal Staff Salaries	\$ 141,305
Subtotal Faculty and Staff Salaries	\$ 549,115
Non Salary Expenses	
Consultant Fees	\$ 100,000
In State Travel	\$ 7,452
Out of State Travel	\$ 9,000
SOPHAS/ASPPH Dues/Membership Fees	\$ 36,050
Other Expenses (student recruitment, marketing and outreach)	\$ 24,000
Office Supplies General	\$ 1,500
Computer Supplies	\$ 1,000
Copier Supplies General	\$ 500
Parking Permits	\$ 100
Postage including Overnight Delivery	\$ 900
Telecom Charges including Long Distance	\$ 1,000
Curriculum Development	\$ 50,000
Printing	\$ 2,000
Computer Equipment	\$ 6,000
Banner Tax	\$ 2,717
CPH Space Needs (Dean, Sr. Program Manager, Admin III, Conference Room,	
Space/Facility @ 800 sq. ft. plus common area (\$16.50 per sq ft)	\$ 13,200
Space Build-out	\$ 25,000
Subtotal Non Salary Expenses	\$ 280,419
Totals	\$ 829,534

RESEARCH GRANTS

In FY13 investigators at UNM held multi-millions of dollars in grants/contracts that funded projects related to public health issues.

Health Sciences Center (HSC):

67 investigators held 254 grants/contracts
 \$41,772,672.00 in annual direct costs
 \$6,171,017.00 in F&A, totaling \$47,943,689.00

New Mexico Department of Health direct contracts with HSC:

46 investigators held 92 grants/contracts totaling
 \$13,300,973.00 in annual direct costs
 \$713,232.00 in F&A, totaling \$14,014,205.00

Central and South Campuses:

20 investigators held 122 grants/contracts
 \$16,127,478.00 in annual direct costs
 \$1,481,672.00 in F&A, totaling \$17,609,150.00.

UNM generated \$79,567,044.00 in public health-related research funding.

The College of Population* Health proposal was approved by unanimous voice vote of the Faculty Senate.

11. 10-Year Academic Calendars

Associate Registrar Alec Reber reported on the 10-Year Academic Calendars.

Date: April 2014

TO: UNM Faculty and Administrators
 FROM: Alec Reber, Associate Registrar
 SUBJECT: 10 Year Academic Calendars

Listed below is the 10-year Semester Dates Calendar. Although not official it may be useful for long term planning.

TEN YEAR SEMESTER DATES CALENDAR 2015-2025

This calendar is published for the purpose of determining semester starting and ending dates beyond the current academic calendar and is subject to change.

Year	Spring			Summer		Fall		
	Begin	Break	End	Begin	End	Begin	Break	End
2014	Jan 20	Mar 16-23	May 17	Jun 2	Jul 26	Aug 18	Oct 9-10	Dec 13
2015	Jan 12	Mar 8-15	May 9	Jun 1	Jul 25	Aug 17	Oct 8-9	Dec 12
2016	Jan 18	Mar 13-20	May 14	Jun 6	Jul 30	Aug 22	Oct 13-14	Dec 17
2017	Jan 16	Mar 12-19	May 13	Jun 5	Jul 29	Aug 21	Oct 12-13	Dec 16
2018	Jan 15	Mar 11-18	May 12	Jun 4	Jul 28	Aug 20	Oct 11-12	Dec 15
2019	Jan 14	Mar 10-17	May 11	Jun 3	Jul 27	Aug 19	Oct 10-11	Dec 14
2020	Jan 13	Mar 8-15	May 9	Jun 1	Jul 25	Aug 17	Oct 8-9	Dec 12
2021	Jan 18	Mar 14-21	May 15	Jun 7	Jul 31	Aug 23	Oct 14-15	Dec 18
2022	Jan 17	Mar 13-20	May 14	Jun 6	Jul 30	Aug 22	Oct 13-14	Dec 17
2023	Jan 16	Mar 12-19	May 13	Jun 5	Jul 29	Aug 21	Oct 12-13	Dec 16
2024	Jan 15	Mar 10-17	May 11	Jun 3	Jul 27	Aug 19	Oct 10-11	Dec 14
2025	Jan 20	Mar 16-23	May 17	Jun 2	Jul 26	Aug 18	Oct 9-10	Dec 13

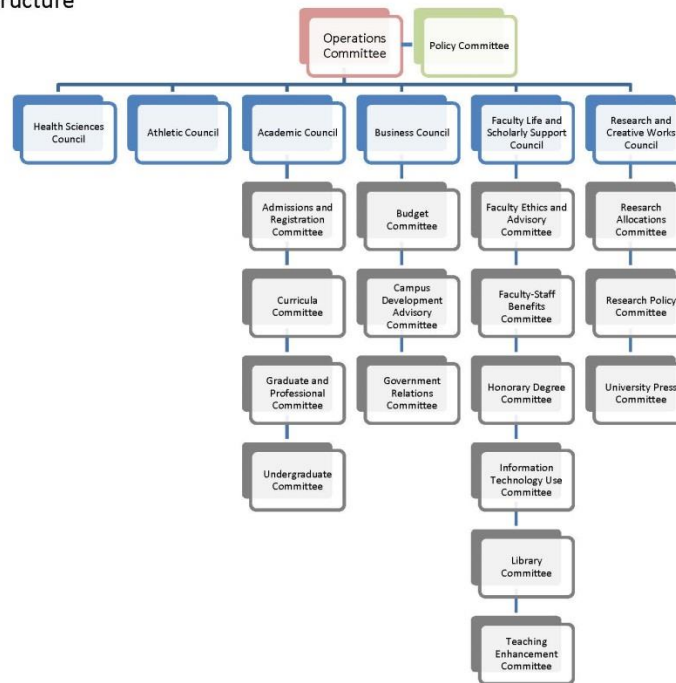
• All dates subject to change.

The 10-Year Academic Calendars were approved by unanimous voice vote of the Faculty Senate.

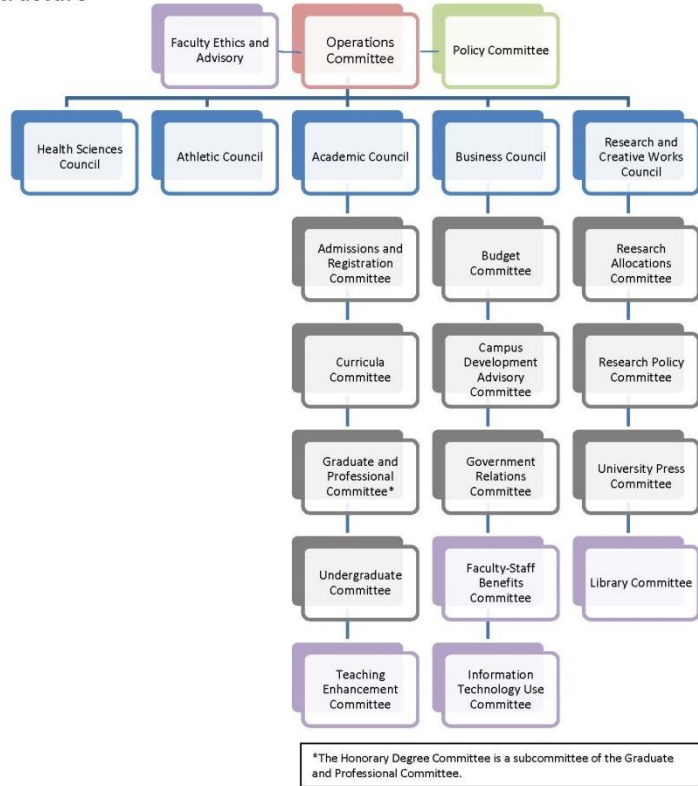
12. Faculty Senate Council Structure Proposal

Past Faculty Senate President Amy Neel reported on the Faculty Senate Council Structure. The Faculty Senate Ethics and Advisory Committee and the Faculty Senate Policy Committee will report directly to the Operations Committee. The Faculty Senate Ethics and Advisory Committee is not a very active Committee but when it is called to work on an issue it is very important and doesn't really fit under the Council structures. The Faculty Senate Policy Committee hasn't ever reported to a Council structure it has always reported to the Operations Committee. The Faculty Life and Scholarly Support Council will be removed. There will be elections held for the Faculty Senate Council Chairs.

Current Structure



Proposed Structure



Faculty Senate Council Re-Structure

Proposed language for discussion

The Faculty Senate Operations Committee is comprised of Faculty Senators and At-Large Senators elected by the Faculty Senate. Each elected member will be chair one of the Faculty Senate Councils as part of their Senate Operations role. The Health Science Council Chair must be a Senator from the Health Sciences Center; all other Council Chair positions can be held by any Faculty Senator in good standing (*is this true – any other parameters – tenure status?*). During the Faculty Senate Operations Committee election the candidates are encouraged to express interest in the Chair position of one or more of the Councils. The candidate does not need to be a current or past member of any of the committees that make up the Council. The standard Operations Committee term is two academic years. The member can choose to change Councils after the first year (*not sure about this but why not??*).

The Faculty Senate Council structure will be up for approval at the April 22, 2014 Faculty Senate meeting. Faculty Senate President Richard Holder encouraged faculty to send him their input regarding the proposed Faculty Senate Council structure.

13. Human Resources Update

Director of University Benefits Elaine Phelps updated the Faculty Senate regarding benefits. The Board of Regents did not approve the health insurance at today's meeting. There is a possibility that there could be no approval regarding benefits rates until the Board of Regents meeting that is scheduled on April 8, 2014. As of today open enrollment is scheduled for April 23, 2014 and ending May 14, 2014. The end date is scheduled around faculty's presence on campus. Every employee who would like to participate on the medical insurance will have to enroll also for those that are already enrolled will have to re-enroll. The reason for the enrollment is due to the Lovelace/Blue Cross separation. The Department of Justice should be approving the proposal of Blue Cross Blue Shield replacing Lovelace in the next month or two. This means that the current Lovelace members will be assigned to Blue Cross Blue Shield. If approved, the transition will have to occur on May 1, 2014. During open enrollment those carriers will need to re-enroll and

chose what third party administrator for next fiscal year. There will be three party administrators starting July 1, Blue Cross Blue Shield/ Lovelace network, a Blue Cross Blue Shield / Lovelace Blue Cross Blue Shield/ International network and Lobo Care. Those that enroll with Presbyterian nothing will change. The third party administrator will be the Health Science Center/ Maritan that will work well with getting care through UNMH and Lobo Care. It will be a medical homes model which means if you enroll with that network you will have coordinated care through the Health Sciences Center, hospitalizations, physicians, pharmacy etc. In a medical homes model should you want to go to their local network outside of Lobo Care you will need to get a referral from your HSC doctor to meet with a Presbyterian, Blue Cross Blue Shield/ Lovelace provider similar to HMO model. Human Resources will contact any carriers of health insurance if they do not enroll by the enrollment deadline.

14. New Business and Open Discussion

Meeting adjourned at 5:15 p.m.

*Accredited public health programs seeking a change in accreditation status may not refer to themselves as schools or colleges of public health until an application for accreditation as a school of public health has been submitted and approved by CEPH.